

## CLN1 (I65) polyclonal antibody

Catalog: BS2843

Host: Rabbit

Reactivity: Human, Mouse, Rat

### BackGround:

CLN1 (ceroid lipofuscinosis 1), also known as PPT, INCL or PPT1 (palmitoylprotein thioesterase 1), is a 306 amino acid glycosylated protein that localizes to lysosome and is a member of the palmitoyl-protein thioesterase family. CLN1 functions to remove thioester-linked fatty acyl groups from a variety of substrates, such as palmitate, from modified cysteine residues in proteins or peptides during lysosomal degradation. Defects in the gene encoding CLN1 are a cause of infantile neuronal ceroid lipofuscinosis 1 (CLN1 or INCL) and neuronal ceroid lipofuscinosis 4 (CLN4). Neuronal ceroid lipofuscinoses are progressive neurodegenerative, lysosomal storage diseases characterized by intracellular accumulation of autofluorescent liposomal material, with clinical symptoms including seizures, dementia, visual loss and/or cerebral atrophy.

### Product:

Rabbit IgG, 1mg/ml in PBS with 0.02% sodium azide, 50% glycerol, pH 7.2

### Molecular Weight:

~ 34 kDa

### Swiss-Prot:

P50897

### Purification & Purity:

The antibody was affinity-purified from rabbit antiserum by affinity-chromatography using epitope-specific immunogen and the purity is > 95% (by SDS-PAGE).

### Applications:

WB: 1:500~1:1000

IHC: 1:50~1:200

### Storage & Stability:

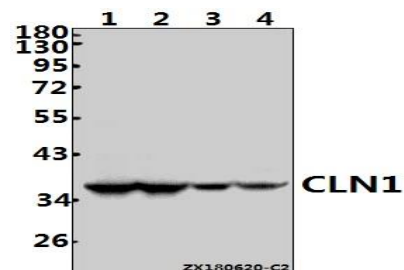
Store at 4 °C short term. Aliquot and store at -20 °C long

term. Avoid freeze-thaw cycles.

### Specificity:

CLN1 (I65) polyclonal antibody detects endogenous levels of CLN1 protein.

### DATA:



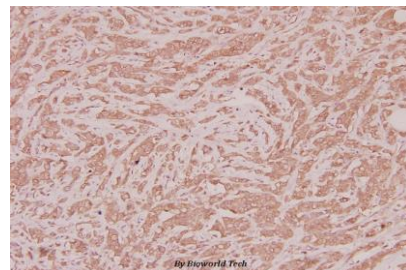
Western blot (WB) analysis of CLN1 (I65) pAb at 1:1000 dilution

Lane 1: A549 whole cell lysate (40ug)

Lane 2: HepG2 whole cell lysate (40ug)

Lane 3: The Brain tissue lysate of Mouse (40ug)

Lane 4: The Spleen tissue lysate of Rat (40ug)



Immunohistochemistry (IHC) analysis of CLN1 (I65) pAb in paraffin-embedded human breast carcinoma tissue at 1:100.

### Note:

For research use only, not for use in diagnostic procedure.

### Bioworld Technology, Inc.

Add: 1660 South Highway 100, Suite 500 St. Louis Park, MN 55416, USA.

Email: [info@bioworld.com](mailto:info@bioworld.com)

Tel: 6123263284

Fax: 6122933841

### Bioworld technology, co. Ltd.

Add: No 9, weidi road Qixia District Nanjing, 210046, P. R. China.

Email: [info@biogot.com](mailto:info@biogot.com)

Tel: 0086-025-68037686

Fax: 0086-025-68035151