

## PGE synthase (I79) polyclonal antibody

Catalog: BS2846

Host: Rabbit

Reactivity: Human, Mouse, Rat

### BackGround:

Prostaglandin E synthase (PGE synthase), also known as FIG12 and MGST1-L1, is a member of protein super family MAPEG, which consists of membrane associated proteins involved in eicosanoid and glutathione metabolism. The expression of this membrane-associated protein can be induced by the pro-inflammatory cytokine, IL-1 $\beta$ . PGE synthase is expressed in seminal vesicles, deferent ducts, kidney, heart and spleen. The enzyme activity of PGE synthase in most organs is glutathione-dependent. PGE synthase may play a significant role in the progression of Alzheimer's disease.

### Product:

Rabbit IgG, 1mg/ml in PBS with 0.02% sodium azide, 50% glycerol, pH7.2

### Molecular Weight:

~17 kDa

### Swiss-Prot:

O14684

### Purification&Purity:

The antibody was affinity-purified from rabbit antiserum by affinity-chromatography using epitope-specific immunogen and the purity is > 95% (by SDS-PAGE).

### Applications:

WB: 1:500~1:1000

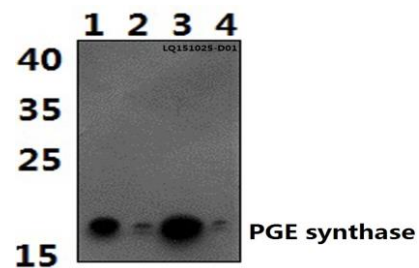
### Storage&Stability:

Store at 4 °C short term. Aliquot and store at -20 °C long term. Avoid freeze-thaw cycles.

### Specificity:

PGE synthase (I79) polyclonal antibody detects endogenous levels of PGE synthase protein.

### DATA:



Western blot (WB) analysis of PGE synthase (I79) polyclonal antibody at 1:500 dilution

Lane1:NIH-3T3 whole cell lysate(40ug)

Lane2:HeLa whole cell lysate(40ug)

Lane3:H9C2 whole cell lysate(40ug)

Lane4:SP2/0 whole cell lysate(40ug)

### Note:

For research use only, not for use in diagnostic procedure.

### Bioworld Technology, Inc.

Add: 1660 South Highway 100, Suite 500 St. Louis Park, MN 55416, USA.

Email: [info@bioworld.com](mailto:info@bioworld.com)

Tel: 6123263284

Fax: 6122933841

### Bioworld technology, co. Ltd.

Add: No 9, weidi road Qixia District Nanjing, 210046, P. R. China.

Email: [info@biogot.com](mailto:info@biogot.com)

Tel: 0086-025-68037686

Fax: 0086-025-68035151