

MRPL15 polyclonal antibody

Catalog: BS3037

Host: Rabbit

Reactivity: Human

BackGround:

MRPL15 is encoded by nuclear genes and helps in protein synthesis within the mitochondrion. A large number of SNPs genotyped in genome-wide association studies poses a significant computational challenge in the identification of gene-gene interactions.

Product:

Rabbit IgG, 1mg/ml in PBS with 0.02% sodium azide, 50% glycerol, pH7.2

Molecular Weight:

~ 35 kDa

Swiss-Prot:

Q9P015

Purification&Purity:

The antibody was affinity-purified from rabbit antiserum by affinity-chromatography using epitope-specific immunogen and the purity is > 95% (by SDS-PAGE).

Applications:

WB: 1:500~1:1000

Storage&Stability:

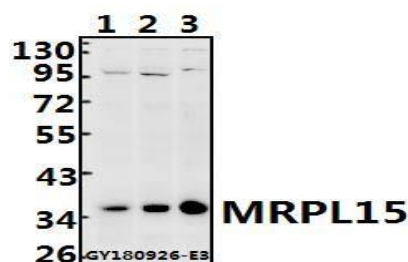
Store at 4 °C short term. Aliquot and store at -20 °C long

term. Avoid freeze-thaw cycles.

Specificity:

MRPL15 polyclonal antibody detects endogenous levels of MRPL15 protein.

DATA:



Western blot (WB) analysis of MRPL15 polyclonal antibody at 1:500 dilution

Lane1:SGC7901 whole cell lysate(40ug)

Lane2:HCT116 whole cell lysate(40ug)

Lane3:HEK293T whole cell lysate(40ug)

Note:

For research use only, not for use in diagnostic procedure.

Bioworld Technology, Inc.

Add: 1660 South Highway 100, Suite 500 St. Louis Park, MN 55416, USA.

Email: info@bioworld.com

Tel: 6123263284

Fax: 6122933841

Bioworld technology, co. Ltd.

Add: No 9, weidi road Qixia District Nanjing, 210046, P. R. China.

Email: info@biogot.com

Tel: 0086-025-68037686

Fax: 0086-025-68035151