

## RPS9 (E73) polyclonal antibody

Catalog: BS3045

Host: Rabbit

Reactivity: Human, Mouse, Rat

### BackGround:

Ribosomes, the organelles that catalyze protein synthesis, are composed of a small subunit (40S) and a large subunit (60S) that consist of over 80 distinct ribosomal proteins. Mammalian ribosomal proteins are encoded by multigene families that contain processed pseudogenes and one functional intron-containing gene within their coding regions. Ribosomal Protein L27, also known as RPL27, is a 136 amino acid protein belonging to the ribosomal protein L27e family exists as a component of the 60S subunit, possibly playing a role in protein translation. Like most ribosomal proteins, Ribosomal Protein L27 exists as multiple processed pseudogenes that are scattered throughout the genome. Considered a novel candidate housekeeping gene, the gene encoding Ribosomal Protein L27 maps to human chromosome 17, which comprises over 2.5% of the human genome and encodes over 1,200 genes.

### Product:

Rabbit IgG, 1mg/ml in PBS with 0.02% sodium azide, 50% glycerol, pH7.2

### Molecular Weight:

~ 26 kDa

### Swiss-Prot:

P46781

### Purification&Purity:

The antibody was affinity-purified from rabbit antiserum by affinity-chromatography using epitope-specific immunogen and the purity is > 95% (by SDS-PAGE).

### Applications:

WB: 1:500~1:1000

IHC: 1:50~1:200

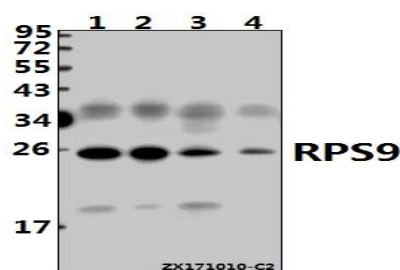
### Storage&Stability:

Store at 4 °C short term. Aliquot and store at -20 °C long term. Avoid freeze-thaw cycles.

### Specificity:

Ribosomal Protein S9 (E73) polyclonal antibody detects endogenous levels of Ribosomal Protein S9 protein.

### DATA:



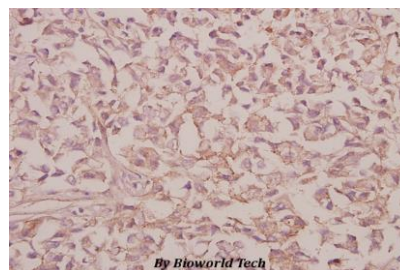
Western blot (WB) analysis of RPS9 (E73) pAb at 1:500 dilution

Lane1:HeLa whole cell lysate(20ug)

Lane2:SGC7901 whole cell lysate(20ug)

Lane3:The Testis tissue lysate of Mouse(40ug)

Lane4:The Testis tissue lysate of Rat(40ug)



Immunohistochemistry (IHC) analyzes of RPS9 (E73) pAb in paraffin-embedded human colorectal carcinoma tissue at 1:50.

### Note:

For research use only, not for use in diagnostic procedure.

### Bioworld Technology, Inc.

Add: 1660 South Highway 100, Suite 500 St. Louis Park, MN 55416, USA.

Email: [info@bioworld.com](mailto:info@bioworld.com)

Tel: 6123263284

Fax: 6122933841

### Bioworld technology, co. Ltd.

Add: No 9, weidi road Qixia District Nanjing, 210046, P. R. China.

Email: [info@biogot.com](mailto:info@biogot.com)

Tel: 0086-025-68037686

Fax: 0086-025-68035151