

LYPLA1 (K90) polyclonal antibody

Catalog: BS3063

Host: Rabbit

Reactivity: Human, Mouse, Rat

BackGround:

Acyl-protein thioesterase 1 (APT1, Lysophospholipase 1) is a member of a family of critical enzymes, lysophospholipases, that act on biological membranes to regulate the multifunctional lysophospholipids. APT1 hydrolyzes fatty acids from S-acylated cysteine residues in proteins such as trimeric G alpha proteins or HRAS. The role of APT1 in regulating lysophospholipids is important because increased levels of lysophospholipids are detected in a variety of diseases, including atherosclerosis and hyperlipidemia. Regulated expression of acyl-protein thioesterase by PKC has been suggested to have important implications for signal transduction processes.

Product:

Rabbit IgG, 1mg/ml in PBS with 0.02% sodium azide, 50% glycerol, pH7.2

Molecular Weight:

~ 25 kDa

Swiss-Prot:

O75608

Purification&Purity:

The antibody was affinity-purified from rabbit antiserum by affinity-chromatography using epitope-specific immunogen and the purity is > 95% (by SDS-PAGE).

Applications:

WB: 1:500~1:1000

IHC: 1:50~1:200

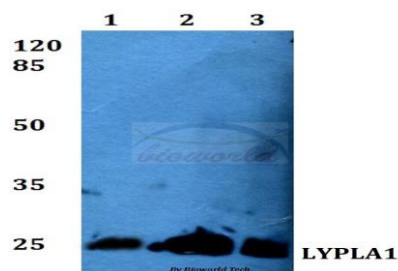
Storage&Stability:

Store at 4 °C short term. Aliquot and store at -20 °C long term. Avoid freeze-thaw cycles.

Specificity:

LYPLA1 (K90) polyclonal antibody detects endogenous levels of LYPLA1 protein.

DATA:

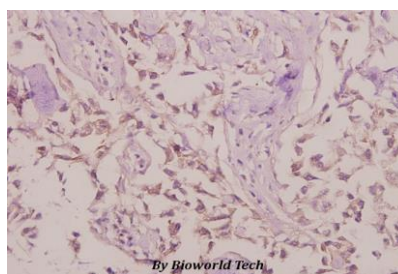


Western blot (WB) analysis of LYPLA1 (K90) polyclonal antibody at 1:500 dilution

Lane1:A549 whole cell lysate

Lane2:Mouse liver tissue lysate

Lane3:Rat liver tissue lysate



Immunohistochemistry (IHC) analyzes of LYPLA1 (K90) pAb in paraffin-embedded human colorectal carcinoma tissue at 1:50.

Note:

For research use only, not for use in diagnostic procedure.

Bioworld Technology, Inc.

Add: 1660 South Highway 100, Suite 500 St. Louis Park, MN 55416, USA.

Email: info@bioworld.com

Tel: 6123263284

Fax: 6122933841

Bioworld technology, co. Ltd.

Add: No 9, weidi road Qixia District Nanjing, 210046, P. R. China.

Email: info@biogot.com

Tel: 0086-025-68037686

Fax: 0086-025-68035151