

## CLC-6 (K649) polyclonal antibody

Catalog: BS3104

Host: Rabbit

Reactivity: Human, Mouse

### BackGround:

The family of voltage-dependent chloride channels (CLCs) regulate cellular trafficking of chloride ions, a critical component of all living cells. CLCs regulate excitability in muscle and nerve cells, aid in organic solute transport and maintain cellular volume. The genes encoding human CLC-1 through CLC-7 map to chromosomes 7, 3q26, 4q32, Xp22, Xp11, 1p36 and 16p13, respectively. CLC-1 is highly expressed in skeletal muscle. Mutations in the gene encoding CLC-1 lead to myotonia, an inheritable disorder characterized by muscle stiffness and renal salt wasting. CLC-2 is highly expressed in the epithelia of several organs including lung, which suggests CLC-2 may be a possible therapeutic target for cystic fibrosis. CLC-3 expression is particularly abundant in neuronal tissue, while CLC-4 expression is evident in skeletal and cardiac muscle as well as brain. Mutations in the gene encoding CLC-5 lead to Dent's disease, a renal disorder characterized by proteinuria and hypercalciuria. CLC-6 and CLC-7 are broadly expressed in several tissues including testes, kidney, brain and muscle.

### Product:

Rabbit IgG, 1mg/ml in PBS with 0.02% sodium azide, 50% glycerol, pH7.2

### Molecular Weight:

~ 90 kDa

### Swiss-Prot:

P51797

### Purification&Purity:

The antibody was affinity-purified from rabbit antiserum by affinity-chromatography using epitope-specific immunogen and the purity is > 95% (by SDS-PAGE).

### Applications:

WB: 1:500~1:1000

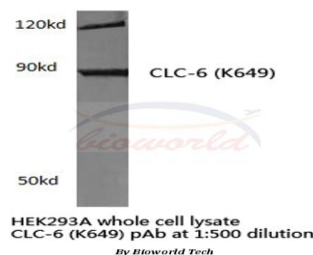
### Storage&Stability:

Store at 4 °C short term. Aliquot and store at -20 °C long term. Avoid freeze-thaw cycles.

### Specificity:

CLC-6 (K649) polyclonal antibody detects endogenous levels of CLC-6 protein.

### DATA:



Western blot (WB) analysis of CLC-6 (K649) polyclonal antibody in extracts from HEK293A cells.

### Note:

For research use only, not for use in diagnostic procedure.

### Bioworld Technology, Inc.

Add: 1660 South Highway 100, Suite 500 St. Louis Park, MN 55416, USA.

Email: [info@bioworld.com](mailto:info@bioworld.com)

Tel: 6123263284

Fax: 6122933841

### Bioworld technology, co. Ltd.

Add: No 9, weidi road Qixia District Nanjing, 210046, P. R. China.

Email: [info@biogot.com](mailto:info@biogot.com)

Tel: 0086-025-68037686

Fax: 0086-025-68035151