

## CHSY2 (R671) polyclonal antibody

Catalog: BS3106

Host: Rabbit

Reactivity: Human, Mouse, Rat

### Background:

Chondroitin sulfate synthases (CHSYs) synthesize chondroitin sulfate, a glycosaminoglycan expressed on the surface of most cells and in extracellular matrices. Glycosaminoglycan chains are covalently linked to various of core protein families and regulate many biologic processes, including extracellular matrix deposition, cell proliferation and recognition, and morphogenesis. The CHSY family includes CHSY1, CHSY2 and CHSY3. CHSY1 and CHSY3 display both glucuronyltransferase and N-acetylgalactosaminyltransferase activities, while CHSY2 is required for chondroitin polymerizing activity. CHSY2 localizes to the Golgi apparatus and is expressed ubiquitously, with highest expression observed in pancreas, ovary, brain, heart, skeletal muscle, colon, kidney, liver, stomach, small intestine and placenta.

### Product:

Rabbit IgG, 1mg/ml in PBS with 0.02% sodium azide, 50% glycerol, pH7.2

### Molecular Weight:

~ 85 kDa

### Swiss-Prot:

Q8IZ52

### Purification&Purity:

The antibody was affinity-purified from rabbit antiserum by affinity-chromatography using epitope-specific immunogen and the purity is > 95% (by SDS-PAGE).

### Applications:

WB: 1:500~1:1000

IHC: 1:50~1:200

IF: 1:50~1:200

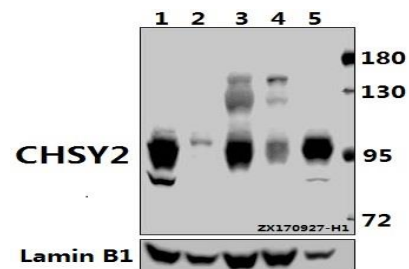
### Storage&Stability:

Store at 4 °C short term. Aliquot and store at -20 °C long term. Avoid freeze-thaw cycles.

### Specificity:

CHSY2 (R671) polyclonal antibody detects endogenous levels of CHSY2 protein.

### DATA:



Western blot (WB) analysis of CHSY2 (R671) pAb at 1:500 dilution

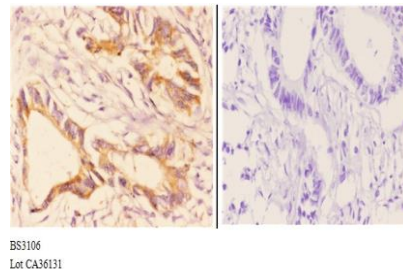
Lane1:PC12 whole cell lysate(40ug)

Lane2:AML-12 whole cell lysate(40ug)

Lane3:HEK293T whole cell lysate(40ug)

Lane4:L02 whole cell lysate(40ug)

Lane5:A2780 whole cell lysate(40ug)



Immunohistochemistry (IHC) analyzes of CHSY2 (R671) pAb in paraffin-embedded human rectum carcinoma tissue at 1:50. showing moderate cytoplasmic and membranous staining. Negative control (the right) Using PBS instead of primary antibody, secondary antibody is Goat Anti-Rabbit IgG-biotin followed by avidin-peroxidase.

### Note:

For research use only, not for use in diagnostic procedure.

### Bioworld Technology, Inc.

Add: 1660 South Highway 100, Suite 500 St. Louis Park, MN 55416, USA.

Email: [info@bioworld.com](mailto:info@bioworld.com)

Tel: 6123263284

Fax: 6122933841

### Bioworld technology, co. Ltd.

Add: No 9, weidi road Qixia District Nanjing, 210046, P. R. China.

Email: [info@biogot.com](mailto:info@biogot.com)

Tel: 0086-025-68037686

Fax: 0086-025-68035151