

ERdj3 (K66) polyclonal antibody

Catalog: BS3114

Host: Rabbit

Reactivity: Human, Mouse, Rat

BackGround:

Members of the heat shock protein 40 (HSP 40) family of proteins all contain a highly conserved J domain that associates with HSP 70 and regulates the function of HSP 70 by activating its adenosine triphosphatase activity. ERdj3, an HSP 40 chaperone, is expressed in the ER lumen, where it interacts with BiP, a molecule involved in retrotranslocating proteins out of the ER. ERdj3 also associates with several other protein substrates, including unfolded light chains, a nonsecreted Ig light chain mutant and a VSV-G ts045 mutant. Shiga toxin (Stx) is a bacterial tool that enzymatically inactivates the 28S rRNA, inhibiting protein synthesis of infected cells. Stx also interacts with ERdj3 and Sec 61 to form a complex through which proteins are retrotranslocated to the cytoplasm. ERdj3 may play a role in the ER quality control system.

Product:

Rabbit IgG, 1mg/ml in PBS with 0.02% sodium azide, 50% glycerol, pH7.2

Molecular Weight:

~ 40 kDa

Swiss-Prot:

Q9UBS4

Purification&Purity:

The antibody was affinity-purified from rabbit antiserum by affinity-chromatography using epitope-specific immunogen and the purity is > 95% (by SDS-PAGE).

Applications:

WB: 1:500~1:1000

IHC/IF: 1:50~1:200

IP: 1:10~1:100

Storage&Stability:

Store at 4 °C short term. Aliquot and store at -20 °C long term. Avoid freeze-thaw cycles.

Specificity:

ERdj3 (K66) polyclonal antibody detects endogenous

levels of ERdj3 protein.

DATA:



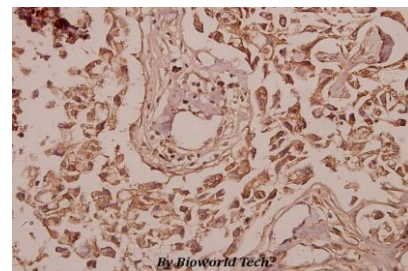
Western blot (WB) analysis of ERdj3 (K66) pAb at 1:500 dilution

Lane1:HEK293T whole cell lysate(40ug)

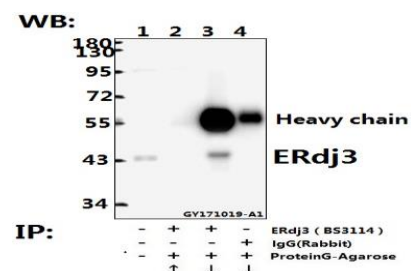
Lane2:PANC1 whole cell lysate(40ug)

Lane3:The Lung tissue lysate of Mouse(40ug)

Lane4:The Kidney tissue lysate of Rat(40ug)



Immunohistochemistry (IHC) analyzes of ERdj3 (K66) pAb in paraffin-embedded human colorectal carcinoma tissue at 1:50.



Immunoprecipitation of L02 whole cell lysate using ERdj3 (K66) pAb (Sepharose Bead Conjugate) #BD0047(lane 2 and lane 3) and Nonspecific IgG Control (Sepharose Bead Conjugate)#BD0047 (lane 4 and lane 5) .Lane 1 is 20% input. The western blot was probed using ERdj3 (K66) pAb #BS3114. “ ↑ ” (supernatant) ; “ ↓ ” (deposition)

Note:

Bioworld Technology, Inc.

Add: 1660 South Highway 100, Suite 500 St. Louis Park, MN 55416, USA.

Email: info@bioworld.com

Tel: 6123263284

Fax: 6122933841

Bioworld technology, co. Ltd.

Add: No 9, weidi road Qixia District Nanjing, 210046, P. R. China.

Email: info@biogot.com

Tel: 0086-025-68037686

Fax: 0086-025-68035151



PRODUCT DATA SHEET

Bioworld Technology, Inc.

For research use only, not for use in diagnostic procedure.

Bioworld Technology, Inc.

Add: 1660 South Highway 100, Suite 500 St. Louis Park,
MN 55416, USA.

Email: info@bioworld.com

Tel: 6123263284

Fax: 6122933841

Bioworld technology, co. Ltd.

Add: No 9, weidi road Qixia District Nanjing, 210046,
P. R. China.

Email: info@biogot.com

Tel: 0086-025-68037686

Fax: 0086-025-68035151