

INSL4 (L79) polyclonal antibody

Catalog: BS3118

Host: Rabbit

Reactivity: Human, Mouse, Rat

BackGround:

Insulin is a secreted peptide hormone that elicits metabolic effects such as increases in glucose uptake and glycogen synthesis leading to a decrease in blood glucose concentration. Insulin is first formed as a precursor molecule, preproinsulin, which is later cleaved to proinsulin and finally to the mature insulin hormone. Insulin-like peptides (INSL proteins), also designated Relaxinlike factors, are members of the insulin family, which regulate cell growth, metabolism and tissue-specific functions. INSL1-7 are mostly secreted proteins that are expressed mainly in testis, placenta, uterus or prenatal tissues. INSL4 is a 139 amino acid secreted protein expressed in the placenta, uterus and in fetal perichondrium. It may play an important role in the regulation of bone formation and in trophoblast development.

Product:

Rabbit IgG, 1mg/ml in PBS with 0.02% sodium azide, 50% glycerol, pH7.2

Molecular Weight:

~ 19 kDa

Swiss-Prot:

Q14641

Purification&Purity:

The antibody was affinity-purified from rabbit antiserum by affinity-chromatography using epitope-specific immunogen and the purity is > 95% (by SDS-PAGE).

Applications:

WB: 1:500~1:1000

IHC: 1:50~1:200

IF: 1:50~1:200

Storage&Stability:

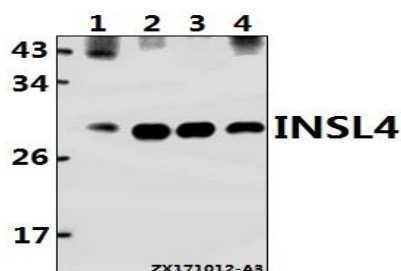
Store at 4 °C short term. Aliquot and store at -20 °C long

term. Avoid freeze-thaw cycles.

Specificity:

INSL4 (L79) polyclonal antibody detects endogenous levels of INSL4 protein.

DATA:



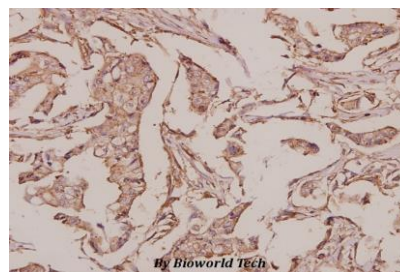
Western blot (WB) analysis of INSL4 (L79) pAb at 1:500 dilution

Lane1:HeLa whole cell lysate(40ug)

Lane2:AML-12 whole cell lysate(20ug)

Lane3:H9C2 whole cell lysate(20ug)

Lane4:H1792 whole cell lysate(40ug)



Immunohistochemistry (IHC) analyzes of INSL4 (L79) pAb in paraffin-embedded human breast carcinoma tissue at 1:50.

Note:

For research use only, not for use in diagnostic procedure.

Bioworld Technology, Inc.

Add: 1660 South Highway 100, Suite 500 St. Louis Park, MN 55416, USA.

Email: info@bioworld.com

Tel: 6123263284

Fax: 6122933841

Bioworld technology, co. Ltd.

Add: No 9, weidi road Qixia District Nanjing, 210046, P. R. China.

Email: info@biogot.com

Tel: 0086-025-68037686

Fax: 0086-025-68035151