

CEP70 (L276) polyclonal antibody

Catalog: BS3280

Host: Rabbit

Reactivity: Human, Mouse, Rat

BackGround:

Centrosomal protein of 70 kDa, plays a role in the organization of both preexisting and nascent microtubules in interphase cells. During mitosis, required for the organization and orientation of the mitotic spindle.

Product:

Rabbit IgG, 1mg/ml in PBS with 0.02% sodium azide, 50% glycerol, pH7.2

Molecular Weight:

~ 70 kDa

Swiss-Prot:

Q8NHQ1

Purification&Purity:

The antibody was affinity-purified from rabbit antiserum by affinity-chromatography using epitope-specific immunogen and the purity is > 95% (by SDS-PAGE).

Applications:

WB: 1:500~1:1000

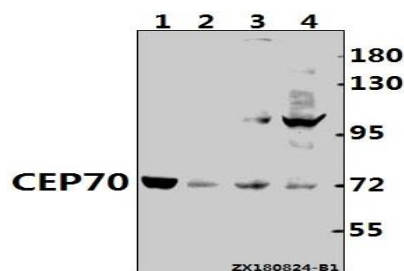
Storage&Stability:

Store at 4 °C short term. Aliquot and store at -20 °C long

term. Avoid freeze-thaw cycles.

Specificity:

CEP70 pAb detects endogenous levels of CEP70 protein.

DATA:

Western blot (WB) analysis of CEP70 (L276) Antibody at 1:500 dilution

Lane1: The Testis tissue lysate of Rat(30ug)

Lane2: The Brain tissue lysate of Mouse(40ug)

Lane3: SGC7901 whole cell lysate(40ug)

Lane4: HEK293T whole cell lysate(40ug)

Note:

For research use only, not for use in diagnostic procedure.

Bioworld Technology, Inc.

Add: 1660 South Highway 100, Suite 500 St. Louis Park, MN 55416, USA.

Email: info@bioworld.com

Tel: 6123263284

Fax: 6122933841

Bioworld technology, co. Ltd.

Add: No 9, weidi road Qixia District Nanjing, 210046, P. R. China.

Email: info@biogot.com

Tel: 0086-025-68037686

Fax: 0086-025-68035151