

## CMTM3 (E13) polyclonal antibody

Catalog: BS3285

Host: Rabbit

Reactivity: Human, Mouse, Rat

### BackGround:

CMTM3 belongs to the chemokine-like factor gene superfamily, a novel family that is similar to the chemokine and the transmembrane 4 superfamilies of signaling molecules. This gene is one of several chemokine-like factor genes located in a cluster on chromosome 16.

### Product:

Rabbit IgG, 1mg/ml in PBS with 0.02% sodium azide, 50% glycerol, pH7.2

### Molecular Weight:

~ 20 kDa

### Swiss-Prot:

Q96MX0

### Purification&Purity:

The antibody was affinity-purified from rabbit antiserum by affinity-chromatography using epitope-specific immunogen and the purity is > 95% (by SDS-PAGE).

### Applications:

WB: 1:1000~1:2000

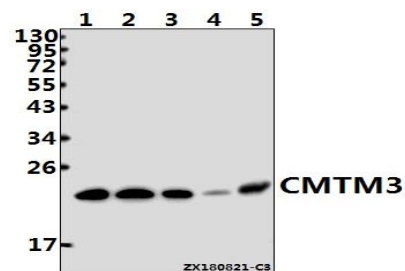
### Storage&Stability:

Store at 4 °C short term. Aliquot and store at -20 °C long term. Avoid freeze-thaw cycles.

### Specificity:

CMTM3(E13) pAb detects endogenous levels of CMTM3 protein.

### DATA:



Western blot (WB) analysis of CMTM3 (E13) pAb at 1:500 dilution

Lane1:K562 whole cell lysate(40ug)

Lane2:A375 whole cell lysate(40ug)

Lane3:HeLa whole cell lysate(40ug)

Lane4:The Embryo tissue lysate of Mouse(40ug)

Lane5:The Testis tissue lysate of Rat(40ug)

### Note:

For research use only, not for use in diagnostic procedure.

### Bioworld Technology, Inc.

Add: 1660 South Highway 100, Suite 500 St. Louis Park, MN 55416, USA.

Email: [info@bioworld.com](mailto:info@bioworld.com)

Tel: 6123263284

Fax: 6122933841

### Bioworld technology, co. Ltd.

Add: No 9, weidi road Qixia District Nanjing, 210046, P. R. China.

Email: [info@biogot.com](mailto:info@biogot.com)

Tel: 0086-025-68037686

Fax: 0086-025-68035151