

SMRTe (K535) polyclonal antibody

Catalog: BS3439

Host: Rabbit

Reactivity: Human, Mouse, Rat

BackGround:

The most well characterized nuclear receptor corepressors are NCoR1 (nuclear receptor corepressor) and its close paralog NCoR2, also known as SMRT (silencing mediator for retinoic acid and thyroid hormone receptors). NCoR1 and SMRT function to transcriptionally silence various unliganded, DNA bound non-steroidal nuclear receptors by serving as a large molecular scaffold that bridges the receptors with multiple chromatin remodeling factors that repress nuclear receptor-mediated gene transcription, in part, through deacetylation of core histones surrounding target promoters. Indeed, the N-terminal portion of NCoR1 and SMRT possess multiple distinct transcriptional repression domains (RDs) responsible for the recruitment of additional components of the corepressor complex such as HDACs, mSin3, GPS2, and TBL1/TBLR1. In between the RDs lies a pair of potent repressor motifs known as SANT motifs (SWI3, ADA2, N-CoR, and TFIIB), which recruit HDAC3 and histones to the repressor complex in order to enhance HDAC3 activity. The C-terminal portion of NCoR1 and SMRT contain multiple nuclear receptor interaction domains (NDs), each of which contains a conserved CoRNR box (or L/I-X-X-I/V-I) motif that allow for binding to various unliganded nuclear hormone receptors such as thyroid hormone (THR) and retinoic acid (RAR) receptors.

Product:

Rabbit IgG, 1mg/ml in PBS with 0.02% sodium azide, 50% glycerol, pH7.2

Molecular Weight:

~ 274 kDa

Swiss-Prot:

Q9Y618

Purification&Purity:

The antibody was affinity-purified from rabbit antiserum by affinity-chromatography using epitope-specific im-

munogen and the purity is > 95% (by SDS-PAGE).

Applications:

WB: 1:500~1:1000

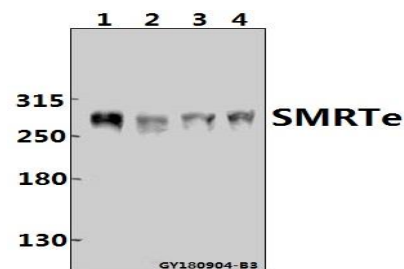
Storage&Stability:

Store at 4 °C short term. Aliquot and store at -20 °C long term. Avoid freeze-thaw cycles.

Specificity:

SMRTe (K535) pAb detects endogenous levels of SMRTe protein.

DATA:



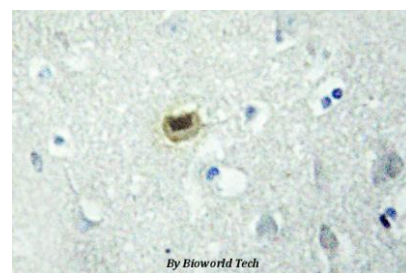
Western blot (WB) analysis of SMRTe (K535) Antibody at 1:500 dilution

Lane1:A549 whole cell lysate(40ug)

Lane2:Hela whole cell lysate(40ug)

Lane3:3T3-L1 whole cell lysate(40ug)

Lane4:C6 whole cell lysate(40ug)



Note:

For research use only, not for use in diagnostic procedure.

Bioworld Technology, Inc.

Add: 1660 South Highway 100, Suite 500 St. Louis Park, MN 55416, USA.

Email: info@bioworld.com

Tel: 6123263284

Fax: 6122933841

Bioworld technology, co. Ltd.

Add: No 9, weidi road Qixia District Nanjing, 210046, P. R. China.

Email: info@biogot.com

Tel: 0086-025-68037686

Fax: 0086-025-68035151



PRODUCT DATA SHEET

Bioworld Technology, Inc.

Bioworld Technology, Inc.

Add: 1660 South Highway 100, Suite 500 St. Louis Park,
MN 55416, USA.

Email: info@bioworld.com

Tel: 6123263284

Fax: 6122933841

Bioworld technology, co. Ltd.

Add: No 9, weidi road Qixia District Nanjing, 210046,
P. R. China.

Email: info@biogot.com

Tel: 0086-025-68037686

Fax: 0086-025-68035151