

Cathepsin E (I292) polyclonal antibody

Catalog: BS3446

Host: Rabbit

Reactivity: Human, Mouse, Rat

BackGround:

Cathepsin E is an intracellular aspartic protease of the pepsin family, which is structurally highly homologous to the lysosomal aspartic protease cathepsin D. Cathepsin E is less abundant than Cathepsin D and has a more limited distribution, which includes lymphoid tissues, gastrointestinal tract tissue, blood cells, microglia and activated B lymphocytes. It is not expressed in resting B lymphocytes. Cathepsin E may have a role in immune function. It is most likely involved in the processing of antigenic peptides during MHC class II-mediated antigen presentation. It may also play a role in activation-induced lymphocyte depletion in the thymus, and in neuronal degeneration and glial cell activation in the brain.

Product:

Rabbit IgG, 1mg/ml in PBS with 0.02% sodium azide, 50% glycerol, pH7.2

Molecular Weight:

~ 48 kDa

Swiss-Prot:

P14091

Purification&Purity:

The antibody was affinity-purified from rabbit antiserum by affinity-chromatography using epitope-specific immunogen and the purity is > 95% (by SDS-PAGE).

Applications:

IHC: 1:50~1:200

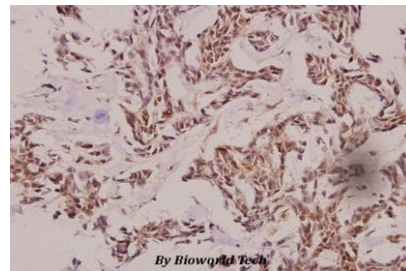
Storage&Stability:

Store at 4 °C short term. Aliquot and store at -20 °C long term. Avoid freeze-thaw cycles.

Specificity:

Cathepsin E (I292) polyclonal antibody detects endogenous levels of Cathepsin E protein.

DATA:



Immunohistochemistry (IHC) analyzes of Cathepsin E (I292) pAb in paraffin-embedded human breast carcinoma tissue at 1:100.

Note:

For research use only, not for use in diagnostic procedure.

Bioworld Technology, Inc.

Add: 1660 South Highway 100, Suite 500 St. Louis Park, MN 55416, USA.

Email: info@bioworld.com

Tel: 6123263284

Fax: 6122933841

Bioworld technology, co. Ltd.

Add: No 9, weidi road Qixia District Nanjing, 210046, P. R. China.

Email: info@biogot.com

Tel: 0086-025-68037686

Fax: 0086-025-68035151