

Cathepsin G (R116) polyclonal antibody

Catalog: BS3458

Host: Rabbit

Reactivity: Human

BackGround:

Cathepsin G is a serine protease, it consisting of a single polypeptide with a molecular weight of 30 kDa as determined by SDS-PAGE. Its substrates are collagen and proteoglycans. Poor regulation of Cathepsin G levels has been associated with various connective tissue disorders, for example pulmonary emphysema and cystic fibrosis.

Product:

Rabbit IgG, 1mg/ml in PBS with 0.02% sodium azide, 50% glycerol, pH7.2

Molecular Weight:

~ 30 kDa

Swiss-Prot:

P08311

Purification&Purity:

The antibody was affinity-purified from rabbit antiserum by affinity-chromatography using epitope-specific immunogen and the purity is > 95% (by SDS-PAGE).

Applications:

WB: 1:500~1:1000

IHC: 1:50~1:200

Storage&Stability:

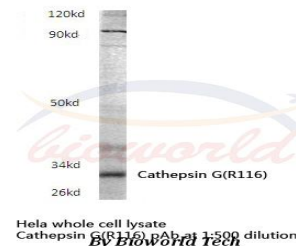
Store at 4 °C short term. Aliquot and store at -20 °C long term. Avoid freeze-thaw cycles.

Specificity:

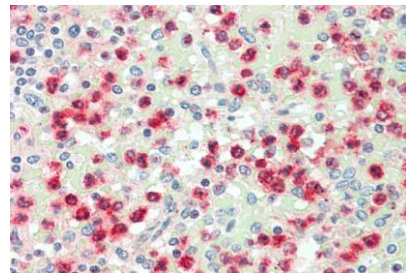
Cathepsin G (R116) polyclonal antibody detects endoge-

nous levels of Cathepsin G protein.

DATA:



Western blot (WB) analysis of Cathepsin G (R116) polyclonal antibody in extracts from HeLa cells.



Immunohistochemistry (IHC) analyzes of Cathepsin G (R116) pAb in paraffin-embedded human spleen tissue at 1:100.

Note:

For research use only, not for use in diagnostic procedure.

Bioworld Technology, Inc.

Add: 1660 South Highway 100, Suite 500 St. Louis Park, MN 55416, USA.

Email: info@bioworld.com

Tel: 6123263284

Fax: 6122933841

Bioworld technology, co. Ltd.

Add: No 9, weidi road Qixia District Nanjing, 210046, P. R. China.

Email: info@biogot.com

Tel: 0086-025-68037686

Fax: 0086-025-68035151