

ATP5J2 (G42) polyclonal antibody

Catalog: BS3496

Host: Rabbit

Reactivity: Human, Mouse, Rat

BackGround:

ATP5J2 is part of the complex F0 domain of the mitochondrial ATP synthase. This produces ATP from ADP in the presence of a proton gradient across the membrane which is generated by electron transport complexes of the respiratory chain. It is composed of two complexes: the soluble catalytic core, F1, and the membrane-spanning component, Fo, which comprises the proton channel. ATP5J2 encodes the f subunit of the Fo complex. There are 2 isoforms produced by alternative splicing.

Product:

Rabbit IgG, 1mg/ml in PBS with 0.02% sodium azide, 50% glycerol, pH7.2

Molecular Weight:

~ 11 kDa

Swiss-Prot:

P56134

Purification&Purity:

The antibody was affinity-purified from rabbit antiserum by affinity-chromatography using epitope-specific immunogen and the purity is > 95% (by SDS-PAGE).

Applications:

IHC: 1:50~1:200

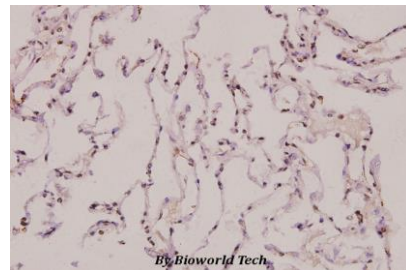
Storage&Stability:

Store at 4 °C short term. Aliquot and store at -20 °C long term. Avoid freeze-thaw cycles.

Specificity:

ATP5J2 (G42) polyclonal antibody detects endogenous levels of ATP5J2 protein.

DATA:



Immunohistochemistry (IHC) analyzes of ATP5J2 (G42) pAb in paraffin-embedded human lung carcinoma tissue at 1:100.

Note:

For research use only, not for use in diagnostic procedure.

Bioworld Technology, Inc.

Add: 1660 South Highway 100, Suite 500 St. Louis Park, MN 55416, USA.

Email: info@bioworld.com

Tel: 6123263284

Fax: 6122933841

Bioworld technology, co. Ltd.

Add: No 9, weidi road Qixia District Nanjing, 210046, P. R. China.

Email: info@biogot.com

Tel: 0086-025-68037686

Fax: 0086-025-68035151