

Dab1 (E214) polyclonal antibody

Catalog: BS3645

Host: Rabbit

Reactivity: Human, Mouse, Rat

BackGround:

Dab1, a homolog of the Drosophila Disabled protein, is an adaptor protein involved in neural development. This cytoplasmic protein is tyrosine-phosphorylated during rapid expansion of the developing nervous system, and it is thought to interact with other proteins via a domain similar to the PTB domains of the Shc family. Dab1 has been shown to interact with the SH2 domains of Src, Fyn and Abl. Mutations in Dab1 result in widespread abnormalities in the brain, similar to those seen in Reelin mutants. Reelin is a secreted protein thought to play a role in directing migrating neurons. Evidence suggests that Dab1 functions downstream of Reelin in a signaling pathway involved in positioning cells in the developing brain

Product:

Rabbit IgG, 1mg/ml in PBS with 0.02% sodium azide, 50% glycerol, pH7.2

Molecular Weight:

~ 60 kDa

Swiss-Prot:

O75553

Purification&Purity:

The antibody was affinity-purified from rabbit antiserum by affinity-chromatography using epitope-specific immunogen and the purity is > 95% (by SDS-PAGE).

Applications:

IHC: 1:50~1:200

IF: 1:50~1:200

Storage&Stability:

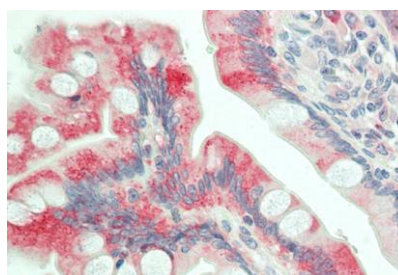
Store at 4 °C short term. Aliquot and store at -20 °C long

term. Avoid freeze-thaw cycles.

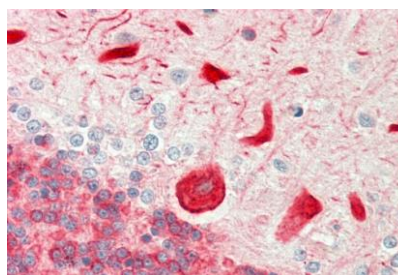
Specificity:

Dab1 (E214) polyclonal antibody detects endogenous levels of Dab1 protein.

DATA:



Immunohistochemistry (IHC) analyzes of Dab1 (E214) pAb in paraffin-embedded human small intestine tissue at 1:100.



Immunohistochemistry (IHC) analyzes of Dab1 (E214) pAb in paraffin-embedded human cerebellum tissue at 1:100.

Note:

For research use only, not for use in diagnostic procedure.

Bioworld Technology, Inc.

Add: 1660 South Highway 100, Suite 500 St. Louis Park, MN 55416, USA.

Email: info@bioworld.com

Tel: 6123263284

Fax: 6122933841

Bioworld technology, co. Ltd.

Add: No 9, weidi road Qixia District Nanjing, 210046, P. R. China.

Email: info@biogot.com

Tel: 0086-025-68037686

Fax: 0086-025-68035151