

Cardiotrophin-1 (H31) polyclonal antibody

Catalog: BS3672

Host: Rabbit

Reactivity: Human, Mouse, Rat

Background:

Cardiotrophin-1 (CT-1) is a member of the IL-6 family of cytokines, which signal through gp130 receptor complexes. gp130 complexes with several different receptor subunits to transmit signals from Cardiotrophin-1, IL-6, LIF, OSM, CNTF and IL-11. Cardiotrophin-1 binds to and activates the leukemia inhibitory factor (LIF) receptor/gp130 receptor complex and has been shown to induce hypertrophy in cardiac myocytes in vitro. Cardiotrophin-1, a secreted protein expressed at high levels in myocardium during cardiogenesis, has been shown to promote proliferation and survival of embryonic cardiomyocytes, suggesting a role for Cardiotrophin-1 in the activation of gp130 during cardiac development.

Product:

Rabbit IgG, 1mg/ml in PBS with 0.02% sodium azide, 50% glycerol, pH7.2

Molecular Weight:

~ 27 kDa

Swiss-Prot:

Q16619

Purification&Purity:

The antibody was affinity-purified from rabbit antiserum by affinity-chromatography using epitope-specific immunogen and the purity is > 95% (by SDS-PAGE).

Applications:

WB: 1:500~1:1000

IHC: 1:50~1:200

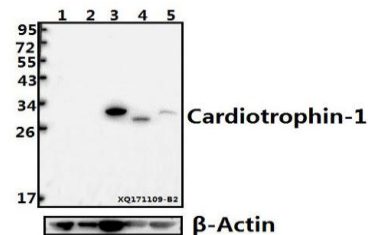
Storage&Stability:

Store at 4 °C short term. Aliquot and store at -20 °C long term. Avoid freeze-thaw cycles.

Specificity:

Cardiotrophin-1 (H31) polyclonal antibody detects endogenous levels of Cardiotrophin-1 protein.

DATA:



Western blot (WB) analysis of Cardiotrophin-1 (H31) pAb at 1:500 dilution

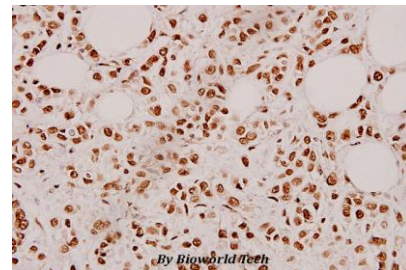
Lane1:PC3 whole cell lysate(40ug)

Lane2:K562 whole cell lysate(20ug)

Lane3:Jurkat whole cell lysate(40ug)

Lane4:The Muscle tissue lysate of Mouse(40ug)

Lane5:H9C2 whole cell lysate(40ug)



Immunohistochemistry (IHC) analyzes of Cardiotrophin-1 (H31) pAb in paraffin-embedded human breast carcinoma tissue at 1:100.

Note:

For research use only, not for use in diagnostic procedure.

Bioworld Technology, Inc.

Add: 1660 South Highway 100, Suite 500 St. Louis Park, MN 55416, USA.

Email: info@bioworld.com

Tel: 6123263284

Fax: 6122933841

Bioworld technology, co. Ltd.

Add: No 9, weidi road Qixia District Nanjing, 210046, P. R. China.

Email: info@biogot.com

Tel: 0086-025-68037686

Fax: 0086-025-68035151