

## RPL28 (Y77) polyclonal antibody

Catalog: BS3790

Host: Rabbit

Reactivity: Human, Mouse, Rat

### Background:

Ribosomes, the organelles that catalyze protein synthesis, consist of a small 40S subunit and a large 60S subunit. Together these subunits are composed of 4 RNA species and approximately 80 structurally distinct proteins. This gene encodes a ribosomal protein that is a component of the 60S subunit. The protein belongs to the L28E family of ribosomal proteins. It is located in the cytoplasm. Variable expression of this gene in colorectal cancers compared to adjacent normal tissues has been observed, although no correlation between the level of expression and the severity of the disease has been found. As is typical for genes encoding ribosomal proteins, there are multiple processed pseudogenes of this gene dispersed through the genome. Alternative splicing results in multiple transcript variants encoding distinct isoforms.

### Product:

Rabbit IgG, 1mg/ml in PBS with 0.02% sodium azide, 50% glycerol, pH7.2

### Molecular Weight:

~ 16 kDa

### Swiss-Prot:

P46779

### Purification&Purity:

The antibody was affinity-purified from rabbit antiserum by affinity-chromatography using epitope-specific immunogen and the purity is > 95% (by SDS-PAGE).

### Applications:

WB: 1:500~1:1000

IHC: 1:50~1:200

IP: 1:10~1:100

### Storage&Stability:

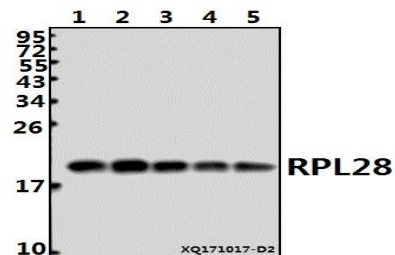
Store at 4 °C short term. Aliquot and store at -20 °C long term. Avoid freeze-thaw cycles.

### Specificity:

Ribosomal Protein L28 (Y77) polyclonal antibody detects

endogenous levels of Ribosomal Protein L28 protein.

### DATA:



Western blot (WB) analysis of RPL28 (Y77) pAb at 1:500 dilution

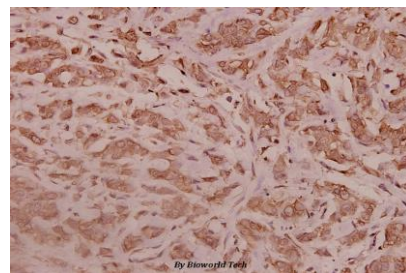
Lane1:HEK293T whole cell lysate(40ug)

Lane2:PC3 whole cell lysate(20ug)

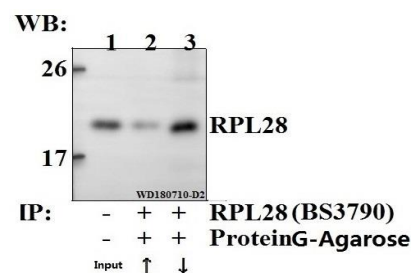
Lane3:A549 whole cell lysate(20ug)

Lane4:The Lung tissue lysate of Rat(20ug)

Lane5:The Kidney tissue lysate of Mouse(40ug)



Immunohistochemistry (IHC) analyzes of RPL28 (Y77) pAb in paraffin-embedded human breast carcinoma tissue at 1:100.



Immunoprecipitation of HEK293T cell lysate using RPL28 (Y77) pAb (Sepharose Bead Conjugate) #BD0048(lane 2 and lane 3). Lane 1 is 30% input. The western blot was probed using RPL28 (Y77) #BS3790.

“ ↑ ” (supernatant) ; “ ↓ ” (deposition)

### Note:

### Bioworld Technology, Inc.

Add: 1660 South Highway 100, Suite 500 St. Louis Park, MN 55416, USA.

Email: [info@bioworld.com](mailto:info@bioworld.com)

Tel: 6123263284

Fax: 6122933841

### Bioworld technology, co. Ltd.

Add: No 9, weidi road Qixia District Nanjing, 210046, P. R. China.

Email: [info@biogot.com](mailto:info@biogot.com)

Tel: 0086-025-68037686

Fax: 0086-025-68035151



## PRODUCT DATA SHEET

Bioworld Technology, Inc.

---

For research use only, not for use in diagnostic procedure.

---

### **Bioworld Technology, Inc.**

**Add:** 1660 South Highway 100, Suite 500 St. Louis Park,  
MN 55416, USA.

**Email:** [info@bioworld.com](mailto:info@bioworld.com)

**Tel:** 6123263284

**Fax:** 6122933841

### **Bioworld technology, co. Ltd.**

**Add:** No 9, weidi road Qixia District Nanjing, 210046,  
P. R. China.

**Email:** [info@biogot.com](mailto:info@biogot.com)

**Tel:** 0086-025-68037686

**Fax:** 0086-025-68035151