

## APLP-2 (Y274) polyclonal antibody

Catalog: BS3808

Host: Rabbit

Reactivity: Human, Mouse, Rat

### BackGround:

APLP1 (amyloid precursor-like protein 1) is a protein whose predicted amino acid sequence is 42% identical and 64% similar to that of the amyloid beta protein precursor (APP). APLP2 is a human sperm membrane protein which contains a segment with high homology to the transmembrane-cytoplasmic domains of APP found in brain plaques of Alzheimer disease patients. The human amyloid precursor-like protein APLP2 is a highly conserved homolog of a sequence-specific DNA-binding mouse protein with an important function in the cell cycle.

### Product:

Rabbit IgG, 1mg/ml in PBS with 0.02% sodium azide, 50% glycerol, pH7.2

### Molecular Weight:

~ 87 kDa

### Swiss-Prot:

Q06481

### Purification&Purity:

The antibody was affinity-purified from rabbit antiserum by affinity-chromatography using epitope-specific immunogen and the purity is > 95% (by SDS-PAGE).

### Applications:

IHC: 1:50~1:200

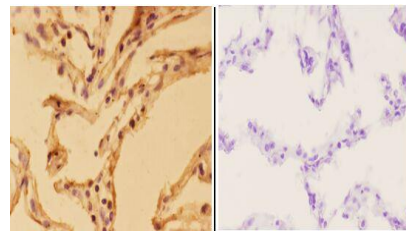
### Storage&Stability:

Store at 4 °C short term. Aliquot and store at -20 °C long term. Avoid freeze-thaw cycles.

### Specificity:

APLP-2 (Y274) polyclonal antibody detects endogenous levels of APLP-2 protein.

### DATA:



BS3808  
Lot CA36131

Immunohistochemistry (IHC) analyzes of APLP-2 (Y274) pAb in paraffin-embedded human lung carcinoma tissue at 1:50, showing cell membrane and nuclear staining. Negative control (the right) Using PBS instead of primary antibody, secondary antibody is Goat Anti-Rabbit IgG-biotin followed by avidin-peroxidase.

### Note:

For research use only, not for use in diagnostic procedure.

### Bioworld Technology, Inc.

Add: 1660 South Highway 100, Suite 500 St. Louis Park, MN 55416, USA.

Email: [info@bioworld.com](mailto:info@bioworld.com)

Tel: 6123263284

Fax: 6122933841

### Bioworld technology, co. Ltd.

Add: No 9, weidi road Qixia District Nanjing, 210046, P. R. China.

Email: [info@biogot.com](mailto:info@biogot.com)

Tel: 0086-025-68037686

Fax: 0086-025-68035151