

CLIC3 (F56) polyclonal antibody

Catalog: BS3832

Host: Rabbit

Reactivity: Human, Mouse, Rat

Background:

CLIC3 (chloride intracellular channel protein 3) is a member of the highly conserved family of chloride ion channels (CLICs) that function in both soluble and integral membrane forms. Chloride channels regulate cellular traffic of chloride ions, a critical component of all living cells. They are involved in membrane potential stabilization, signal transduction, cell volume regulation and organic solute transport. CLIC3 is found in a variety of tissues but is highly expressed in placenta, brain and heart. CLIC3 predominantly localizes to the nucleus and stimulates chloride ion channel activity when expressed in cells. In addition, CLIC3 interacts with ERK 7 and may play a role in the regulation of cell proliferation.

Product:

Rabbit IgG, 1mg/ml in PBS with 0.02% sodium azide, 50% glycerol, pH7.2

Molecular Weight:

~ 27 kDa

Swiss-Prot:

O95833

Purification&Purity:

The antibody was affinity-purified from rabbit antiserum by affinity-chromatography using epitope-specific immunogen and the purity is > 95% (by SDS-PAGE).

Applications:

WB: 1:500~1:1000

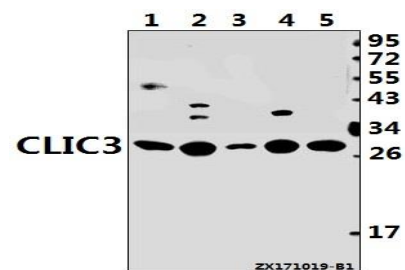
Storage&Stability:

Store at 4 °C short term. Aliquot and store at -20 °C long term. Avoid freeze-thaw cycles.

Specificity:

CLIC3 (F56) polyclonal antibody detects endogenous levels of CLIC3 protein.

DATA:



Western blot (WB) analysis of CLIC3 (F56) pAb at 1:500 dilution

Lane1:3T3-L1 whole cell lysate(40ug)

Lane2:PC12 whole cell lysate(40ug)

Lane3:HCC827 whole cell lysate(40ug)

Lane4:HEK293T whole cell lysate(40ug)

Lane5:H1792 whole cell lysate(40ug)

Note:

For research use only, not for use in diagnostic procedure.

Bioworld Technology, Inc.

Add: 1660 South Highway 100, Suite 500 St. Louis Park, MN 55416, USA.

Email: info@bioworld.com

Tel: 6123263284

Fax: 6122933841

Bioworld technology, co. Ltd.

Add: No 9, weidi road Qixia District Nanjing, 210046, P. R. China.

Email: info@biogot.com

Tel: 0086-025-68037686

Fax: 0086-025-68035151