

## DOCK 180 (K1692) polyclonal antibody

Catalog: BS3846

Host: Rabbit

Reactivity: Human,Rat

### BackGround:

DOCK 180, a 180 kDa protein downstream of Crk, has been identified as a major Crk-associated protein. When DOCK 180 is recruited to the plasma membrane from a cytoplasmic reservoir, presumably by Crk, changes in cellular morphology and spindle formation occur, suggesting DOCK 180 to be a Crk effector molecule

### Product:

Rabbit IgG, 1mg/ml in PBS with 0.02% sodium azide, 50% glycerol, pH7.2

### Molecular Weight:

~ 215 kDa

### Swiss-Prot:

Q14185

### Purification&Purity:

The antibody was affinity-purified from rabbit antiserum by affinity-chromatography using epitope-specific immunogen and the purity is > 95% (by SDS-PAGE).

### Applications:

WB: 1:500~1:1000

IHC: 1:50~1:200

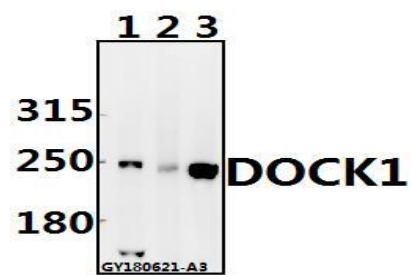
### Storage&Stability:

Store at 4 °C short term. Aliquot and store at -20 °C long term. Avoid freeze-thaw cycles.

### Specificity:

DOCK 180 (K1692) polyclonal antibody detects endogenous levels of DOCK 180 protein.

### DATA:



Western blot (WB) analysis of DOCK1 pAb at 1:500 dilution

Lane1:MCF-7 whole cell lysate(40ug)

Lane2:H1792 whole cell lysate(40ug)

Lane3:C6 whole cell lysate(40ug)

### Note:

For research use only, not for use in diagnostic procedure.

### Bioworld Technology, Inc.

Add: 1660 South Highway 100, Suite 500 St. Louis Park, MN 55416, USA.

Email: [info@bioworld.com](mailto:info@bioworld.com)

Tel: 6123263284

Fax: 6122933841

### Bioworld technology, co. Ltd.

Add: No 9, weidi road Qixia District Nanjing, 210046, P. R. China.

Email: [info@biogot.com](mailto:info@biogot.com)

Tel: 0086-025-68037686

Fax: 0086-025-68035151