

## Connexin 37 (L116) polyclonal antibody

Catalog: BS3866

Host: Rabbit

Reactivity: Human, Mouse, Rat

### Background:

The Connexin 37/GJA4 gene encodes a member of the connexin gene family. The encoded protein is a component of gap junctions, which are composed of arrays of intercellular channels that provide a route for the diffusion of low molecular weight materials from cell to cell. Mutations in this gene have been associated with atherosclerosis and a higher risk of myocardial infarction.

### Product:

Rabbit IgG, 1mg/ml in PBS with 0.02% sodium azide, 50% glycerol, pH7.2

### Molecular Weight:

~ 37 kDa

### Swiss-Prot:

P35212

### Purification&Purity:

The antibody was affinity-purified from rabbit antiserum by affinity-chromatography using epitope-specific immunogen and the purity is > 95% (by SDS-PAGE).

### Applications:

WB: 1:500~1:1000

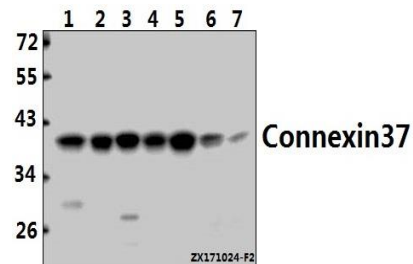
### Storage&Stability:

Store at 4 °C short term. Aliquot and store at -20 °C long term. Avoid freeze-thaw cycles.

### Specificity:

Connexin 37 (L116) polyclonal antibody detects endogenous levels of Connexin 37 protein.

### DATA:



Western blot (WB) analysis of Connexin 37 (L116) pAb at 1:1000 dilution

Lane1:SK-OVCAR3 whole cell lysate(40ug)

Lane2:HepG2 whole cell lysate(20ug)

Lane3:HEK293T whole cell lysate(20ug)

Lane4:SGC7901 whole cell lysate(40ug)

Lane5:L02 whole cell lysate(40ug)

Lane6:PC12 whole cell lysate(40ug)

Lane7:AML-12 whole cell lysate(40ug)

### Note:

For research use only, not for use in diagnostic procedure.

### Bioworld Technology, Inc.

Add: 1660 South Highway 100, Suite 500 St. Louis Park, MN 55416, USA.

Email: [info@bioworld.com](mailto:info@bioworld.com)

Tel: 6123263284

Fax: 6122933841

### Bioworld technology, co. Ltd.

Add: No 9, weidi road Qixia District Nanjing, 210046, P. R. China.

Email: [info@biogot.com](mailto:info@biogot.com)

Tel: 0086-025-68037686

Fax: 0086-025-68035151