

GSTT1 (R31) polyclonal antibody

Catalog: BS3869

Host: Rabbit

Reactivity: Human, Mouse, Rat

BackGround:

The GST superfamily is made up of several subfamilies. Glutathione S-transferase P (GSTP1) belongs to the Pi subfamily and is involved in the conjugation of reduced glutathione to a variety of endogenous levels of and exogenous hydrophobic electrophiles. Glutathione S-transferase Mu 1 (GSTM1) is a cytoplasmic liver protein belonging to the Mu family and has the same basic functions as GSTP1-1. Glutathione S-transferase theta 1 (GSTT1), a cytoplasmic homodimer belonging to the Theta family, is expressed in erythrocytes. It is active in the reduced glutathione conjugation and also displays glutathione peroxidase activity with cumene hydroperoxide.

Product:

Rabbit IgG, 1mg/ml in PBS with 0.02% sodium azide, 50% glycerol, pH7.2

Molecular Weight:

~ 27 kDa

Swiss-Prot:

P30711

Purification&Purity:

The antibody was affinity-purified from rabbit antiserum by affinity-chromatography using epitope-specific immunogen and the purity is > 95% (by SDS-PAGE).

Applications:

WB: 1:500~1:1000

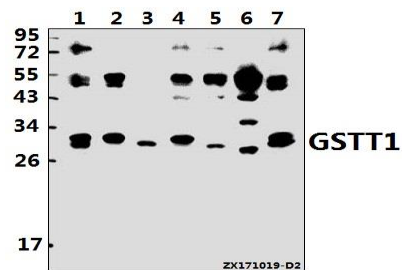
Storage&Stability:

Store at 4 °C short term. Aliquot and store at -20 °C long term. Avoid freeze-thaw cycles.

Specificity:

GSTT1 (R31) polyclonal antibody detects endogenous levels of GSTT1 protein.

DATA:



Western blot (WB) analysis of GSTT1 (R31) pAb at 1:500 dilution

Lane1:H1792 whole cell lysate(40ug)

Lane2:K562 whole cell lysate(40ug)

Lane3:HCC827 whole cell lysate(40ug)

Lane4:Jurkat whole cell lysate(40ug)

Lane5:H9C2 whole cell lysate(40ug)

Lane6:AML-12 whole cell lysate(40ug)

Lane7:HepG2 whole cell lysate(40ug)

Note:

For research use only, not for use in diagnostic procedure.

Bioworld Technology, Inc.

Add: 1660 South Highway 100, Suite 500 St. Louis Park, MN 55416, USA.

Email: info@bioworld.com

Tel: 6123263284

Fax: 6122933841

Bioworld technology, co. Ltd.

Add: No 9, weidi road Qixia District Nanjing, 210046, P. R. China.

Email: info@biogot.com

Tel: 0086-025-68037686

Fax: 0086-025-68035151