

NCAM2 (L296) polyclonal antibody

Catalog: BS3889

Host: Rabbit

Reactivity: Human, Mouse, Rat

BackGround:

NCAM2 is a cell adhesion molecule belonging to the immunoglobulin superfamily. It is differentially expressed in the developing and mature olfactory epithelium and is involved in the guidance of developing olfactory sensory neurons to the glomeruli of the olfactory bulb.

Product:

Rabbit IgG, 1mg/ml in PBS with 0.02% sodium azide, 50% glycerol, pH7.2

Molecular Weight:

~ 125 kDa

Swiss-Prot:

O15394

Purification&Purity:

The antibody was affinity-purified from rabbit antiserum by affinity-chromatography using epitope-specific immunogen and the purity is > 95% (by SDS-PAGE).

Applications:

WB: 1:500~1:1000

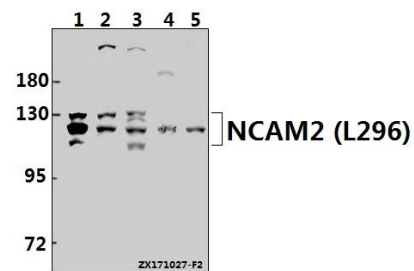
Storage&Stability:

Store at 4 °C short term. Aliquot and store at -20 °C long term. Avoid freeze-thaw cycles.

Specificity:

NCAM2 (L296) polyclonal antibody detects endogenous levels of NCAM2 protein.

DATA:



Western blot (WB) analysis of NCAM2 (L296) pAb at 1:500 dilution

Lane1:K562 whole cell lysate(40ug)

Lane2:MCF-7 whole cell lysate(40ug)

Lane3:HeLa whole cell lysate(40ug)

Lane4:The Brain tissue lysate of Mouse(40ug)

Lane5:The Brain tissue lysate of Rat(40ug)

Note:

For research use only, not for use in diagnostic procedure.

Bioworld Technology, Inc.

Add: 1660 South Highway 100, Suite 500 St. Louis Park, MN 55416, USA.

Email: info@bioworld.com

Tel: 6123263284

Fax: 6122933841

Bioworld technology, co. Ltd.

Add: No 9, weidi road Qixia District Nanjing, 210046, P. R. China.

Email: info@biogot.com

Tel: 0086-025-68037686

Fax: 0086-025-68035151