

Rab 6A (K144) polyclonal antibody

Catalog: BS3920

Host: Rabbit

Reactivity: Human, Mouse, Rat

Background:

Rab proteins are also an integral part of endocytic pathways. Rab 6A is a ubiquitously expressed member of the Rab family of proteins and localizes to the Golgi membrane where it regulates retrograde transport from the late endosomes via the Golgi to endoplasmic reticulum (ER) pathway. Three isoforms exist due to alternative splicing events, namely the ubiquitously expressed isoforms Rab 6A' and Rab 6A, and the brain-specific isoform Rab 6B.

Product:

Rabbit IgG, 1mg/ml in PBS with 0.02% sodium azide, 50% glycerol, pH7.2

Molecular Weight:

~ 24 kDa

Swiss-Prot:

P20340

Purification&Purity:

The antibody was affinity-purified from rabbit antiserum by affinity-chromatography using epitope-specific immunogen and the purity is > 95% (by SDS-PAGE).

Applications:

WB: 1:500~1:1000

IHC: 1:50~1:200

IP: 1:10~1:100

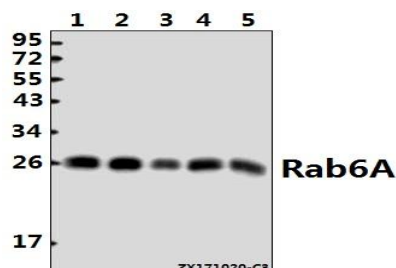
Storage&Stability:

Store at 4 °C short term. Aliquot and store at -20 °C long term. Avoid freeze-thaw cycles.

Specificity:

Rab 6A (K144) polyclonal antibody detects endogenous levels of Rab 6A protein.

DATA:



Western blot (WB) analysis of Rab 6A (K144) pAb at 1:500 dilution

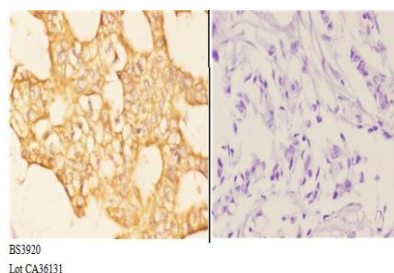
Lane1:MCF-7 whole cell lysate(40ug)

Lane2:HepG2 whole cell lysate(40ug)

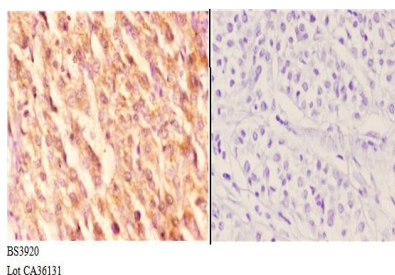
Lane3:K562 whole cell lysate(40ug)

Lane4:The Testis tissue lysate of Mouse(40ug)

Lane5:The Testis tissue lysate of Rat(40ug)



Immunohistochemistry (IHC) analyzes of Rab 6A (K144) pAb in paraffin-embedded human breast carcinoma tissue at 1:50, showing cytoplasmic and membranous staining. Negative control (the right) Using PBS instead of primary antibody, secondary antibody is Goat Anti-Rabbit IgG-biotin followed by avidin-peroxidase.



Immunohistochemistry (IHC) analyzes of Rab 6A (K144) pAb in paraffin-embedded human liver carcinoma tissue at 1:50, showing cytoplasmic and membranous staining. Negative control (the right) Using PBS instead of primary antibody, secondary antibody is Goat Anti-Rabbit

Bioworld Technology, Inc.

Add: 1660 South Highway 100, Suite 500 St. Louis Park, MN 55416, USA.

Email: info@bioworld.com

Tel: 6123263284

Fax: 6122933841

Bioworld technology, co. Ltd.

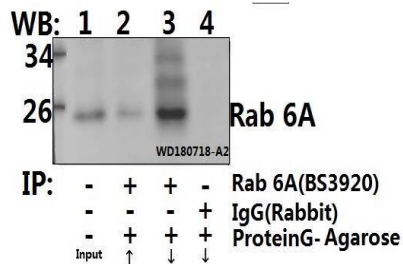
Add: No 9, weidi road Qixia District Nanjing, 210046, P. R. China.

Email: info@biogot.com

Tel: 0086-025-68037686

Fax: 0086-025-68035151

IgG-biotin followed by avidin-peroxidase.



4) .Lane 1 is 30% input. The western blot was probed using Rab 6A (K144). “ ↑ ” (supernatant) ; “ ↓ ” (deposition)

Note:

For research use only, not for use in diagnostic procedure.

Immunoprecipitation of HEK293T cell lysate using Rab 6A (K144) pAb (Sepharose Bead Conjugate) #BD0048(lane 2 and lane 3) and Nonspecific IgG Control (Sepharose Bead Conjugate)#BD0048 (lane

Bioworld Technology, Inc.

Add: 1660 South Highway 100, Suite 500 St. Louis Park, MN 55416, USA.
 Email: info@bioworld.com
 Tel: 6123263284
 Fax: 6122933841

Bioworld technology, co. Ltd.

Add: No 9, weidi road Qixia District Nanjing, 210046, P. R. China.
 Email: info@biogot.com
 Tel: 0086-025-68037686
 Fax: 0086-025-68035151