

## SFRS15 (V641) polyclonal antibody

Catalog: BS3953

Host: Rabbit

Reactivity: Human, Mouse, Rat

### Background:

The family of SR factors all contain one or more RNA recognition motifs (RRM) and an SR-rich domain. They are not only essential for constitutive splicing, but also regulate splicing in a concentration-dependent manner by influencing the selection of alternative splice sites. Splicing factor arginine/serine-rich 15 (SFRS15), also designated CTD-binding SR-like protein RA4, contains one RRM and one SR-rich domains. SFRS15 interacts with C-terminal repetitive domain (CTD) of Pol II and is believed to functionally and physically link transcription and pre-mRNA processing. Localized to the nucleus, SFRS15 is expressed as two isoforms produced by alternative splicing.

### Product:

Rabbit IgG, 1mg/ml in PBS with 0.02% sodium azide, 50% glycerol, pH7.2

### Molecular Weight:

~ 170 kDa

### Swiss-Prot:

O95104

### Purification&Purity:

The antibody was affinity-purified from rabbit antiserum by affinity-chromatography using epitope-specific immunogen and the purity is > 95% (by SDS-PAGE).

### Applications:

WB: 1:500~1:1000

IHC: 1:50~1:200

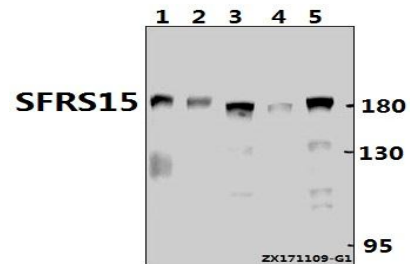
### Storage&Stability:

Store at 4 °C short term. Aliquot and store at -20 °C long term. Avoid freeze-thaw cycles.

### Specificity:

SFRS15 (V641) polyclonal antibody detects endogenous levels of SFRS15 protein.

### DATA:



Western blot (WB) analysis of SFRS15 (V641) pAb at 1:1000 dilution

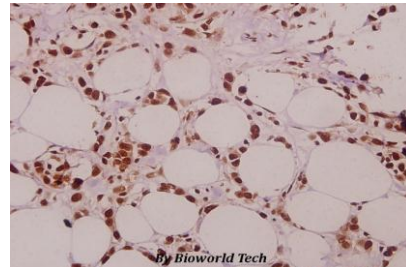
Lane1:C6 whole cell lysate(40ug)

Lane2:CT26 whole cell lysate(40ug)

Lane3:HCT116 whole cell lysate(40ug)

Lane4:SGC7901 whole cell lysate(40ug)

Lane5:HEK293T whole cell lysate(20ug)



Immunohistochemistry (IHC) analyzes of SFRS15 (V641) pAb in paraffin-embedded human colorectal carcinoma tissue at 1:50.

### Note:

For research use only, not for use in diagnostic procedure.

### Bioworld Technology, Inc.

Add: 1660 South Highway 100, Suite 500 St. Louis Park, MN 55416, USA.

Email: [info@bioworld.com](mailto:info@bioworld.com)

Tel: 6123263284

Fax: 6122933841

### Bioworld technology, co. Ltd.

Add: No 9, weidi road Qixia District Nanjing, 210046, P. R. China.

Email: [info@biogot.com](mailto:info@biogot.com)

Tel: 0086-025-68037686

Fax: 0086-025-68035151