

Cdc6 (phospho-S54) polyclonal antibody

Catalog: BS4036

Host: Rabbit

Reactivity: Human, Mouse, Rat

Background:

Cell cycle events are regulated by the sequential activation and deactivation of cyclin dependent kinases (Cdks) and by the proteolysis of cyclins. The cell division cycle (Cdc) genes are required at various points in the cell cycle. Cdc25A, Cdc25B and Cdc25C protein tyrosine phosphatases function as mitotic activators by dephosphorylating Cdc2 p34 on regulatory tyrosine residues. Cdc6 is the human homolog of *Saccharomyces cerevisiae* Cdc6, which is involved in the initiation of DNA replication. Cdc37 appears to facilitate Cdk4/cyclin D1 complex formation and has been shown to form a stable complex with HSP 90.

Product:

Rabbit IgG, 1mg/ml in PBS with 0.02% sodium azide, 50% glycerol, pH7.2

Molecular Weight:

~ 62 kDa

Swiss-Prot:

Q99741

Purification&Purity:

The antibody was affinity-purified from rabbit antiserum by affinity-chromatography using epitope-specific immunogen and the purity is > 95% (by SDS-PAGE).

Applications:

WB: 1:500~1:1000

IHC: 1:50~1:200

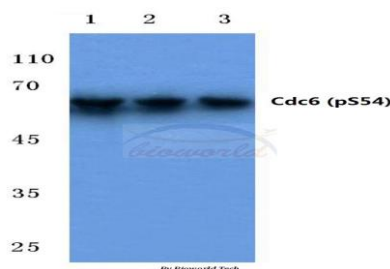
Storage&Stability:

Store at 4 °C short term. Aliquot and store at -20 °C long term. Avoid freeze-thaw cycles.

Specificity:

p-Cdc6 (S54) polyclonal antibody detects endogenous levels of Cdc6 only when phosphorylated at Ser54.

DATA:

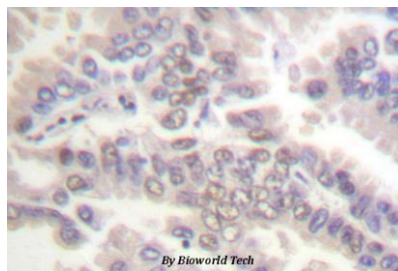


Western blot (WB) analysis of p-Cdc6 (S54) polyclonal antibody at 1:500 dilution

Lane1:Hela cell lysate treated with serum starvation

Lane2:Raw264.7 cell lysate treated with serum starvation

Lane3:H9C2 cell lysate treated with serum starvation



Immunohistochemistry (IHC) analysis of p-Cdc6 (S54) pAb in paraffin-embedded human lung carcinoma tissue.

Note:

For research use only, not for use in diagnostic procedure.

Bioworld Technology, Inc.

Add: 1660 South Highway 100, Suite 500 St. Louis Park, MN 55416, USA.

Email: info@bioworld.com

Tel: 6123263284

Fax: 6122933841

Bioworld technology, co. Ltd.

Add: No 9, weidi road Qixia District Nanjing, 210046, P. R. China.

Email: info@biogot.com

Tel: 0086-025-68037686

Fax: 0086-025-68035151