

Cot (phospho-T290) polyclonal antibody

Catalog: BS4051

Host: Rabbit

Reactivity: Human, Mouse, Rat

BackGround:

The role of mitogen-activated protein kinases (MAPKs) in cell signaling pathways is well established. The rat gene Tpl-2, for tumor progression locus 2, and the human and mouse homologues c-Cot, for cancer osaka thyroid oncogene, encode a proto-oncogene serine/threonine protein kinase that was shown to play a role in the functional activation of the MAP kinase pathway. Overexpression of Cot induces MAP kinase activation in COS-1 and NIH/3T3 cells. Cot-mediated activation of MAP kinase is inhibited by both Ras N17, a dominant negative mutant of c-H-Ras, and Raf-1s621A, a dominant negative mutant of Raf-1, suggesting that Cot functions upstream of Ras and Raf-1. Other studies have shown that a kinase-negative, dominant negative mutant of Cot partially blocks Ras or Raf-1-induced MAP kinase activation, arguing that Cot functions downstream of Ras and Raf-1.

Product:

Rabbit IgG, 1mg/ml in PBS with 0.02% sodium azide, 50% glycerol, pH7.2

Molecular Weight:

~ 53 kDa

Swiss-Prot:

P41279

Purification&Purity:

The antibody was affinity-purified from rabbit antiserum by affinity-chromatography using epitope-specific immunogen and the purity is > 95% (by SDS-PAGE).

Applications:

IHC: 1:50~1:200

IF: 1:50~1:200

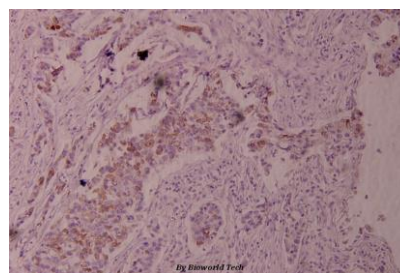
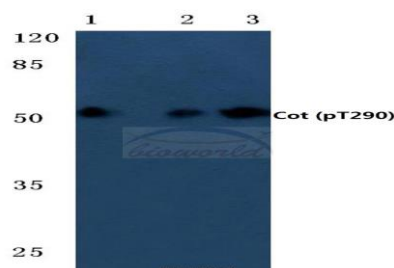
Storage&Stability:

Store at 4 °C short term. Aliquot and store at -20 °C long term. Avoid freeze-thaw cycles.

Specificity:

p-Cot (T290) polyclonal antibody detects endogenous levels of Cot protein only when phosphorylated at Thr290.

DATA:



Immunohistochemistry (IHC) analyzes of p-Cot (T290) pAb in paraffin-embedded human breast carcinoma tissue at 1:100.

Note:

For research use only, not for use in diagnostic procedure.

Bioworld Technology, Inc.

Add: 1660 South Highway 100, Suite 500 St. Louis Park, MN 55416, USA.

Email: info@bioworld.com

Tel: 6123263284

Fax: 6122933841

Bioworld technology, co. Ltd.

Add: No 9, weidi road Qixia District Nanjing, 210046, P. R. China.

Email: info@biogot.com

Tel: 0086-025-68037686

Fax: 0086-025-68035151