

CrkL (phospho-Y207) polyclonal antibody

Catalog: BS4056

Host: Rabbit

Reactivity: Human, Mouse, Rat

Background:

Crk, is a transformation-specific protein that induces elevation of cellular phosphotyrosine levels, but lacks tyrosine kinase activity itself. A second protein, Nck, consists solely of three SH3 domains and one SH2 domain, while GRB2 contains an SH2 domain flanked on both sides by SH3 domains. A member of this protein class, Crk-L, is encoded by a gene located on chromosome 22, band 11, centromeric of the chronic myelogenous leukemia breakpoint region. Crk-L encodes a 303 amino acid protein with one SH2 and two SH3 domains, and a predicted molecular weight of 36 kDa.

Product:

Rabbit IgG, 1mg/ml in PBS with 0.02% sodium azide, 50% glycerol, pH7.2

Molecular Weight:

~ 39 kDa

Swiss-Prot:

P46109

Purification&Purity:

The antibody was affinity-purified from rabbit antiserum by affinity-chromatography using epitope-specific immunogen and the purity is > 95% (by SDS-PAGE).

Applications:

WB: 1:500~1:1000

IHC: 1:50~1:200

Storage&Stability:

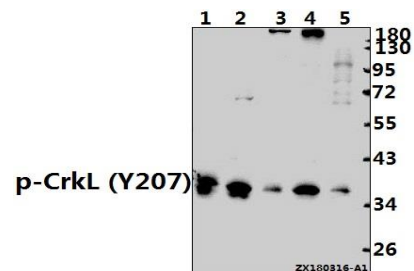
Store at 4 °C short term. Aliquot and store at -20 °C long term. Avoid freeze-thaw cycles.

Specificity:

p-Crk-L (Y207) polyclonal antibody detects endogenous

levels of Crk-L protein only when phosphorylated at Tyr207.

DATA:



Western blot (WB) analysis of p-CrkL (Y207) pAb at 1:500 dilution

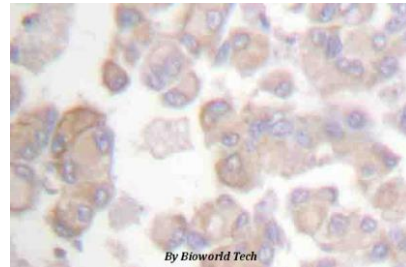
Lane1:MCF-7 whole cell lysate(40ug)

Lane2:HEK293T whole cell lysate(40ug)

Lane3:PMVEC whole cell lysate(40ug)

Lane4:CT26 whole cell lysate(40ug)

Lane5:SGC7901 whole cell lysate(40ug)



Immunohistochemistry (IHC) analyzes of p-Crk-L (Y207) pAb in paraffin-embedded human colon cancer tissue.

Note:

For research use only, not for use in diagnostic procedure.

Bioworld Technology, Inc.

Add: 1660 South Highway 100, Suite 500 St. Louis Park, MN 55416, USA.

Email: info@bioworld.com

Tel: 6123263284

Fax: 6122933841

Bioworld technology, co. Ltd.

Add: No 9, weidi road Qixia District Nanjing, 210046, P. R. China.

Email: info@biogot.com

Tel: 0086-025-68037686

Fax: 0086-025-68035151