

HSP27 (phospho-S15) polyclonal antibody

Catalog: BS4095

Host: Rabbit

Reactivity: Human

BackGround:

Hsp27, also referred to as the Estrogen-Regulated 24K protein and HSP28, is one of several small heat shock proteins (HSP) produced by all organisms studied. Hsp27 synthesis is induced by elevated temperature, as well as estrogen in hormone responsive cells. This protein is involved in stress resistance and actin organization. Interestingly, human HSP27 also shares greater than 50% homology with low molecular weight Drosophila HSP's and mammalian a-crystalline lens protein. Because of the estrogen-responsive nature of Hsp27, this protein has been studied extensively in human estrogen-responsive tissues such as cervix, endometrium and breast tissue. This work has led to the suggestion that Hsp27 may be a useful marker in classifying various hormone sensitive tumors.

Product:

Rabbit IgG, 1mg/ml in PBS with 0.02% sodium azide, 50% glycerol, pH7.2

Molecular Weight:

~ 27 kDa

Swiss-Prot:

P04792

Purification&Purity:

The antibody was affinity-purified from rabbit antiserum by affinity-chromatography using epitope-specific immunogen and the purity is > 95% (by SDS-PAGE).

Applications:

WB: 1:500~1:1000

IHC: 1:50~1:200

IP: 1:50~1:200

Storage&Stability:

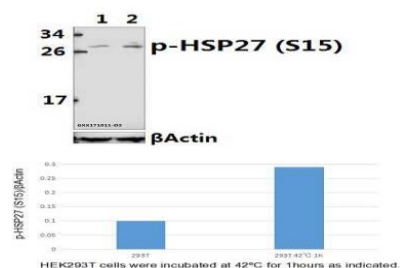
Store at 4 °C short term. Aliquot and store at -20 °C long term. Avoid freeze-thaw cycles.

Specificity:

p-HSP27 (S15) polyclonal antibody detects endogenous levels of HSP27 protein only when phosphorylated at

Ser15.

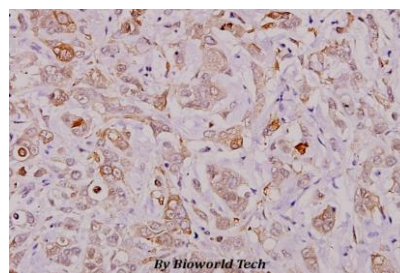
DATA:



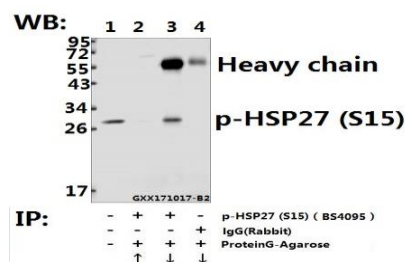
Western blot (WB) analysis of HSP27 (phospho-S15) pAb at 1:500 dilution

Lane1:HEK293T whole cell lysate

Lane2:HEK293T incubated at 42 °C for 1 hour whole cell lysate



Immunohistochemistry (IHC) analyzes of HSP27 (phospho-S15) pAb in paraffin-embedded human breast carcinoma tissue at 1:100.



Immunoprecipitation of L02 whole cell lysate using HSP27 (phospho-S15) pAb (Sephacrose Bead Conjugate) #BD0047(lane 2 and lane 3) and Nonspecific IgG Control (Sephacrose Bead Conjugate)#BD0047 (lane 4). Lane 1 is 20% input. The western blot was probed using HSP27 (phospho-S15) pAb #BS4095. “ ↑ ” (supernatant) ; “ ↓ ” (deposition)

Note:

Bioworld Technology, Inc.

Add: 1660 South Highway 100, Suite 500 St. Louis Park, MN 55416,USA.

Email: info@bioworld.com

Tel: 6123263284

Fax: 6122933841

Bioworld technology, co. Ltd.

Add: No 9, weidi road Qixia District Nanjing, 210046, P. R. China.

Email: info@biogot.com

Tel: 0086-025-68037686

Fax: 0086-025-68035151



PRODUCT DATA SHEET

Bioworld Technology, Inc.

For research use only, not for use in diagnostic procedure.

Bioworld Technology, Inc.

Add: 1660 South Highway 100, Suite 500 St. Louis Park,
MN 55416, USA.

Email: info@bioworld.com

Tel: 6123263284

Fax: 6122933841

Bioworld technology, co. Ltd.

Add: No 9, weidi road Qixia District Nanjing, 210046,
P. R. China.

Email: info@biogot.com

Tel: 0086-025-68037686

Fax: 0086-025-68035151