

C/EBP α (phospho-S21) polyclonal antibody

Catalog: BS4217

Host: Rabbit

Reactivity: Human, Mouse, Rat

Background:

C/EBP α regulates gene expression in a variety of tissues including liver, adipose, lung and intestine. C/EBP α is a basic region/leucine zipper transcription factor selectively expressed during the differentiation of liver, adipose tissue, blood cells and the endocrine pancreas. C/EBP α uses a bipartite structural motif to bind DNA and appears to function exclusively in terminally differentiated, growth-arrested cells. In the liver, C/EBP α is a transactivator of several genes, which are regulated by growth hormone. Growth hormone enhances not only the levels of C/EBP α mRNA and protein, but also the DNA-binding activity of C/EBP α . C/EBP α functions as an important transcription factor that regulates different genes, including Prolactin gene expression.

Product:

Rabbit IgG, 1mg/ml in PBS with 0.02% sodium azide, 50% glycerol, pH7.2

Molecular Weight:

~ 40 kDa

Swiss-Prot:

P49715

Purification&Purity:

The antibody was affinity-purified from rabbit antiserum by affinity-chromatography using epitope-specific immunogen and the purity is > 95% (by SDS-PAGE).

Applications:

WB: 1:500~1:1000

IHC: 1:50~1:200

Storage&Stability:

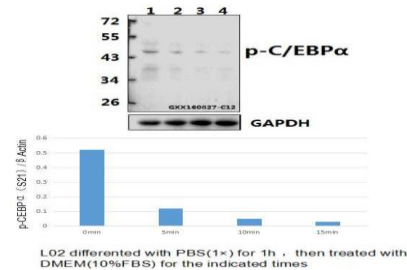
Store at 4 °C short term. Aliquot and store at -20 °C long term. Avoid freeze-thaw cycles.

Specificity:

p-C/EBP α (S21) polyclonal antibody detects endogenous

levels of C/EBP α protein only when phosphorylated at Ser21.

DATA:



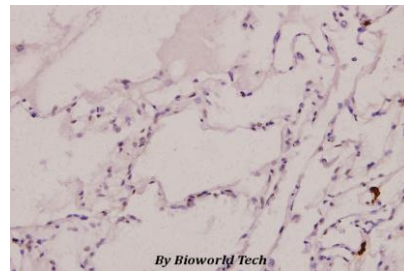
Western blot (WB) analysis of C/EBP α (phospho-S21) polyclonal antibody at 1:500 dilution

Lane1:L02 whole cell lysate

Lane2:L02 treated with PBS(1 \times PBS,PH7.4) for 1 hour then treated with DMEM(10%FBS) for 5 minutes whole cell lysate

Lane3:L02 treated with PBS(1 \times PBS,PH7.4) for 1 hour then treated with DMEM(10%FBS) for 10 minutes whole cell lysate

Lane4:L02 treated with PBS(1 \times PBS,PH7.4) for 1 hour then treated with DMEM(10%FBS) for 15 minutes whole cell lysate



Immunohistochemistry (IHC) analyzes of p-C/EBP α (S21) pAb in paraffin-embedded human lung carcinoma tissue at 1:100.

Note:

For research use only, not for use in diagnostic procedure.

Bioworld Technology, Inc.

Add: 1660 South Highway 100, Suite 500 St. Louis Park, MN 55416, USA.

Email: info@bioworld.com

Tel: 6123263284

Fax: 6122933841

Bioworld technology, co. Ltd.

Add: No 9, weidi road Qixia District Nanjing, 210046, P. R. China.

Email: info@biogot.com

Tel: 0086-025-68037686

Fax: 0086-025-68035151