

## PLC $\gamma$ 2 (phospho-Y753) polyclonal antibody

Catalog: BS4245

Host: Rabbit

Reactivity: Human, Rat

### BackGround:

Phosphoinositide-specific phospholipase C (PLC) plays a crucial role in the initiation of receptor mediated signal transduction through the generation of the two second messengers, inositol 1,4,5-triphosphate and diacylglycerol from phosphatidylinositol 4,5-bisphosphate. There are many mammalian PLC isozymes, including PLC  $\beta$ 1, PLC  $\beta$ 2, PLC  $\beta$ 3, PLC  $\beta$ 4, PLC $\gamma$ 1, PLC $\gamma$ 2, PLC  $\delta$ 1, PLC  $\delta$ 2 and PLC $\epsilon$ . PLC $\delta$  exists as four different isoforms. PLC  $\delta$ 1, a calcium signal amplifier, is activated by an atypical GTP-binding protein. In addition, PLC  $\delta$ 1 is an effector for GTP-binding protein transglutaminase II-mediated oxytocin receptor and  $\alpha$ 1B-adrenoreceptor signaling. Mouse PLC  $\delta$ 1 is highly expressed in brain, heart, lung and testis. PLC  $\delta$  is abnormally accumulated in autopsied brains with Alzheimer's disease (AD), suggesting that it may play a role in the pathology of AD. PLC  $\delta$ 2 is markedly expressed in type II intestinal metaplasia and in the adenocarcinoma. When PLC  $\delta$ 2 is expressed in type I intestinal metaplasia, the metaplasia is generally considered benign, yet evolves toward neoplastic transformation. Thus, PLC  $\delta$ 2 expression may be a possible marker of gastric malignant transformation.

### Product:

Rabbit IgG, 1mg/ml in PBS with 0.02% sodium azide, 50% glycerol, pH7.2

### Molecular Weight:

~ 150 kDa

### Swiss-Prot:

P16885

### Purification&Purity:

The antibody was affinity-purified from rabbit antiserum by affinity-chromatography using epitope-specific immunogen and the purity is > 95% (by SDS-PAGE).

### Applications:

WB: 1:500~1:1000

IHC: 1:50~1:200

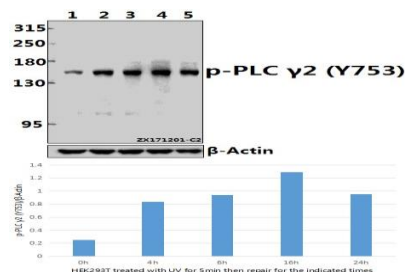
### Storage&Stability:

Store at 4 °C short term. Aliquot and store at -20 °C long term. Avoid freeze-thaw cycles.

### Specificity:

p-PLC  $\gamma$ 2 (Y753) polyclonal antibody detects endogenous levels of PLC  $\gamma$ 2 protein when phosphorylated at Tyr753.

### DATA:



Western blot (WB) analysis of p-PLC  $\gamma$ 2 (Y753) pAb at 1:500 dilution

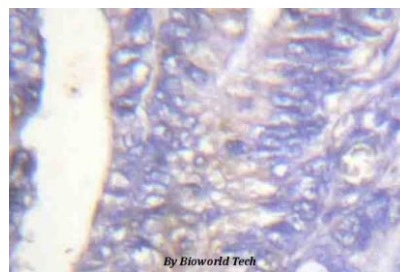
Lane1:HEK293T whole cell lysate

Lane2:HEK293T treated with UV for 5 minutes then repair for 4 hours whole cell lysate

Lane3:HEK293T treated with UV for 5 minutes then repair for 6 hours whole cell lysate

Lane4:HEK293T treated with UV for 5 minutes then repair for 16 hours whole cell lysate

Lane5:HEK293T treated with UV for 5 minutes then repair for 24 hours whole cell lysate



Immunohistochemistry (IHC) analyzes of p-PLC  $\gamma$ 2 (Y753) pAb in paraffin-embedded human colon cancer tissue.

### Note:

For research use only, not for use in diagnostic procedure.

### Bioworld Technology, Inc.

Add: 1660 South Highway 100, Suite 500 St. Louis Park, MN 55416, USA.

Email: [info@bioworld.com](mailto:info@bioworld.com)

Tel: 6123263284

Fax: 6122933841

### Bioworld technology, co. Ltd.

Add: No 9, weidi road Qixia District Nanjing, 210046, P. R. China.

Email: [info@biogot.com](mailto:info@biogot.com)

Tel: 0086-025-68037686

Fax: 0086-025-68035151



## PRODUCT DATA SHEET

Bioworld Technology, Inc.

---

---

### **Bioworld Technology, Inc.**

**Add:** 1660 South Highway 100, Suite 500 St. Louis Park,  
MN 55416, USA.

**Email:** [info@bioworld.com](mailto:info@bioworld.com)

**Tel:** 6123263284

**Fax:** 6122933841

### **Bioworld technology, co. Ltd.**

**Add:** No 9, weidi road Qixia District Nanjing, 210046,  
P. R. China.

**Email:** [info@biogot.com](mailto:info@biogot.com)

**Tel:** 0086-025-68037686

**Fax:** 0086-025-68035151