

## Casein Kinase II $\beta$ (phospho-S209) polyclonal antibody

Catalog: BS4308

Host: Rabbit

Reactivity: Human, Mouse, Rat

### Background:

CK2 (formerly called Casein Kinase II) is a highly conserved protein kinase with more than 300 substrates regulating cell growth, cell death, and cell survival. CK2 has been implicated in the response to UV irradiation-induced DNA damage, targeting XRCC1 and BRCA1 as well as regulating p53 tumor suppressor protein functions. Furthermore, CK2 plays a key role in NF- $\kappa$ B activation.

### Product:

Rabbit IgG, 1mg/ml in PBS with 0.02% sodium azide, 50% glycerol, pH7.2

### Molecular Weight:

~ 27 kDa

### Swiss-Prot:

P67870

### Purification&Purity:

The antibody was affinity-purified from rabbit antiserum by affinity-chromatography using epitope-specific immunogen and the purity is > 96% (by SDS-PAGE).

### Applications:

WB: 1:500~1:1000

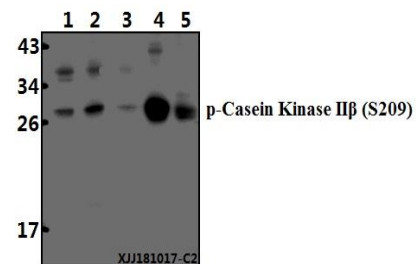
### Storage&Stability:

Store at 4 °C short term. Aliquot and store at -21 °C long term. Avoid freeze-thaw cycles.

### Specificity:

Casein Kinase II $\beta$  (phospho-S209) polyclonal antibody detects endogenous levels of Casein Kinase II $\beta$  protein only when phosphorylated at Ser209.

### DATA:



Western blot (WB) analysis of Casein Kinase II $\beta$  (phospho-S209) polyclonal antibody at 1:500 dilution

Lane1:HEK293T whole cell lysate(40  $\mu$ g)

Lane2:Panc1 whole cell lysate(40  $\mu$ g)

Lane3:U-87MG whole cell lysate(40  $\mu$ g)

Lane4:The Brain tissue lysate of Rat(40  $\mu$ g)

Lane5:The Kidney tissue lysate of Mouse(40  $\mu$ g)

### Note:

For research use only, not for use in diagnostic procedure.

### Bioworld Technology, Inc.

Add: 1660 South Highway 100, Suite 500 St. Louis Park, MN 55416, USA.

Email: [info@bioworld.com](mailto:info@bioworld.com)

Tel: 6123263284

Fax: 6122933841

### Bioworld technology, co. Ltd.

Add: No 9, weidi road Qixia District Nanjing, 210046, P. R. China.

Email: [info@biogot.com](mailto:info@biogot.com)

Tel: 0086-025-68037686

Fax: 0086-025-68035151