

## p68 RNA Helicase (phospho-Y593) polyclonal antibody

Catalog: BS4496

Host: Rabbit

Reactivity: Human, Mouse, Rat

### BackGround:

p68 RNA Helicase is a nuclear protein that exhibits RNA-dependent ATPase activity. Phosphorylation by protein kinase C inhibits p68 RNA Helicase activity. p68 RNA Helicase appears to play a role in organ differentiation during development. Furthermore, p68 RNA Helicase is expressed in early neural development and in various mesodermal tissues in a number of different chordate embryos. At the cellular level, the expression levels of p68 RNA Helicase increase in serum-induced quiescent cell lines. p68 RNA Helicase may function as a coactivator for estrogen receptor  $\alpha$ . Additionally, p68 RNA Helicase associates with transcriptional coactivators CBP and p300. p68 RNA Helicase localizes to the nucleus under normal conditions. During late telophase, p68 RNA Helicase and fibrillarin co-localize to nascent nucleoli. p68 RNA Helicase may function as a heterodimer with p72 RNA Helicase.

### Product:

Rabbit IgG, 1mg/ml in PBS with 0.02% sodium azide, 50% glycerol, pH7.2

### Molecular Weight:

~ 68 kDa

### Swiss-Prot:

P17844

### Purification&Purity:

The antibody was affinity-purified from rabbit antiserum by affinity-chromatography using epitope-specific immunogen and the purity is > 95% (by SDS-PAGE).

### Applications:

WB: 1:500~1:1000

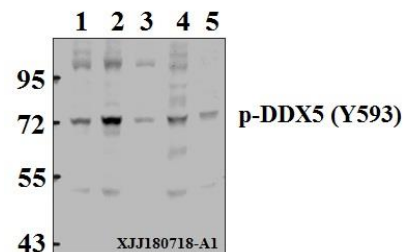
### Storage&Stability:

Store at 4 °C short term. Aliquot and store at -20 °C long term. Avoid freeze-thaw cycles.

### Specificity:

p68 RNA Helicase (phospho-Y593) polyclonal antibody detects endogenous levels of p68 RNA Helicase protein only when phosphorylated at Tyr593.

### DATA:



Western blot (WB) analysis of p68 RNA Helicase (phospho-Y593) polyclonal antibody at 1:500 dilution

Lane1:MCF-7 whole cell lysate(40 µg)

Lane2:A375 whole cell lysate(40 µg)

Lane3:U-87MG whole cell lysate(40 µg)

Lane4:CT-26 whole cell lysate(40 µg)

Lane5:C6 whole cell lysate(40 µg)

### Note:

For research use only, not for use in diagnostic procedure.

### Bioworld Technology, Inc.

Add: 1660 South Highway 100, Suite 500 St. Louis Park, MN 55416, USA.

Email: [info@bioworld.com](mailto:info@bioworld.com)

Tel: 6123263284

Fax: 6122933841

### Bioworld technology, co. Ltd.

Add: No 9, weidi road Qixia District Nanjing, 210046, P. R. China.

Email: [info@biogot.com](mailto:info@biogot.com)

Tel: 0086-025-68037686

Fax: 0086-025-68035151