

KIF20A (phospho-S528) polyclonal antibody

Catalog: BS4594

Host: Rabbit

Reactivity: Human, Mouse, Rat

BackGround:

KIF20A is a member of the kinesin-like protein family and has 1 kinesin motor domain. It interacts with guanosine triphosphate (GTP)-bound forms of RAB6A and RAB6B and may act as a motor required for the retrograde RAB6 regulated transport of Golgi membranes and associated vesicles along microtubules. KIF20A has a microtubule plus end-directed motility.

Product:

Rabbit IgG, 1mg/ml in PBS with 0.02% sodium azide, 50% glycerol, pH7.2

Molecular Weight:

~ 125 kDa

Swiss-Prot:

O95235

Purification&Purity:

The antibody was affinity-purified from rabbit antiserum by affinity-chromatography using epitope-specific immunogen and the purity is > 95% (by SDS-PAGE).

Applications:

WB: 1:500~1:1000

Storage&Stability:

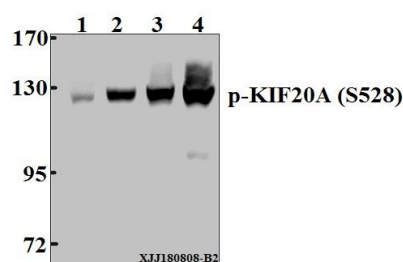
Store at 4 °C short term. Aliquot and store at -20 °C long

term. Avoid freeze-thaw cycles.

Specificity:

KIF20A (phospho-S528) polyclonal antibody detects endogenous levels of KIF20A protein when phosphorylated at Ser528.

DATA:



Western blot (WB) analysis of p-KIF20A (S528) pAb at 1:500 dilution

Lane1:PC12 whole cell lysate(40 µg)

Lane2:The Testis tissue lysate of Mouse(40 µg)

Lane3:SK-OVCAR3 whole cell lysate(40 µg)

Lane4:Myla2059 whole cell lysate(40 µg)

Note:

For research use only, not for use in diagnostic procedure.

Bioworld Technology, Inc.

Add: 1660 South Highway 100, Suite 500 St. Louis Park, MN 55416, USA.

Email: info@bioworld.com

Tel: 6123263284

Fax: 6122933841

Bioworld technology, co. Ltd.

Add: No 9, weidi road Qixia District Nanjing, 210046, P. R. China.

Email: info@biogot.com

Tel: 0086-025-68037686

Fax: 0086-025-68035151