

Cdk9 (phospho-T186) polyclonal antibody

Catalog: BS4892

Host: Rabbit

Reactivity: Human,Rat,Mouse

BackGround:

A family of proteins designated cyclin dependent kinases (Cdks) are critical regulators of cell cycle progression. Cdk family members, including Cdc2 p34, Cdk1-9, PISSLRE, KKIALRE, PITSLRE and PCTAIRE 1-3 are constitutively expressed throughout the cell cycle. Cdc2 p34 activity peaks during mitosis and Cdk2 activity rises in late G1 or early S phase. Cdk4 and Cdk6 are critically involved in G1 to S phase progression. The functions of Cdk3, Cdk5b, PISSLRE, KKIALRE and PCTAIRE 1-3 are less well defined. Cdk9 (also designated PITALRE) has been shown to specifically phosphorylate the retinoblastoma protein. The more recently cloned Drosophila protein, P-TEFb, is thought to be the homolog of mammalian PITALRE. P-TEFb has been shown to be required for HIV Tat transcriptional activation.

Product:

1 mg/ml in Phosphate buffered saline (PBS) with 0.05% sodium azide, approx. pH 7.3.

Molecular Weight:

~ 42, 55 kDa

Swiss-Prot:

P50750

Purification&Purity:

The antibody was affinity-purified from rabbit antiserum by affinity-chromatography using epitope-specific immunogen and the purity is > 95% (by SDS-PAGE).

Applications:

WB: 1:500~1:1000

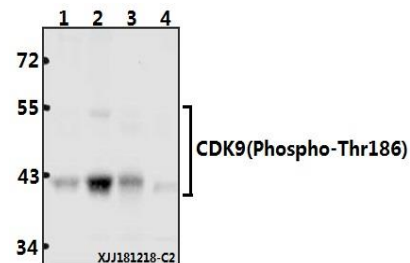
Storage&Stability:

Store at 4 °C short term. Aliquot and store at -20 °C long term. Avoid freeze-thaw cycles.

Specificity:

Cdk9 (phospho-T186) polyclonal antibody detects endogenous levels of Cdk9 protein only when phosphorylated at Thr186.

DATA:



Western blot (WB) analysis of Cdk9 (phospho-T186) polyclonal antibody at 1:500 dilution

Lane1:HeLa whole cell lysate(40ug)

Lane2:MCF-7 whole cell lysate(40ug)

Lane3:The Spleen tissue lysate of Mouse(40ug)

Lane4:C6 whole cell lysate(40ug)

Note:

For research use only, not for use in diagnostic procedure.

Bioworld Technology, Inc.

Add: 1660 South Highway 100, Suite 500 St. Louis Park, MN 55416, USA.

Email: info@bioworld.com

Tel: 6123263284

Fax: 6122933841

Bioworld technology, co. Ltd.

Add: No 9, weidi road Qixia District Nanjing, 210046, P. R. China.

Email: info@biogot.com

Tel: 0086-025-68037686

Fax: 0086-025-68035151