

## NMDA $\epsilon$ 2 (phospho-Y1336) polyclonal antibody

Catalog: BS4909

Host: Rabbit

Reactivity: Human,Rat,Mouse

### BackGround:

Glutamate receptors mediate most excitatory neurotransmission in the brain and play an important role in neural plasticity, neural development and neurodegeneration. Ionotropic glutamate receptors are categorized into NMDA receptors and kainate/AMPA receptors, both of which contain glutamate-gated, cation-specific ion channels. Kainate/AMPA receptors are co-localized with NMDA receptors in many synapses and consist of seven structurally related subunits designated GluR-1 to -7. The kainate/AMPA receptors are primarily responsible for fast excitatory neurotransmission by glutamate, whereas the NMDA receptors exhibit slow kinetics of  $\text{Ca}^{2+}$  ions and a high permeability for  $\text{Ca}^{2+}$  ions. The NMDA receptors consist of five subunits:  $\epsilon$  1, 2, 3, 4 and one  $\zeta$  subunit. The  $\zeta$  subunit is expressed throughout the brainstem whereas the four  $\epsilon$  subunits display limited distribution.

### Product:

1 mg/ml in Phosphate buffered saline (PBS) with 0.05% sodium azide, approx. pH 7.3.

### Molecular Weight:

~ 190 kDa

### Swiss-Prot:

Q13224

### Purification&Purity:

The antibody was affinity-purified from rabbit antiserum by affinity-chromatography using epitope-specific immunogen and the purity is > 95% (by SDS-PAGE).

### Applications:

WB: 1:500~1:1000

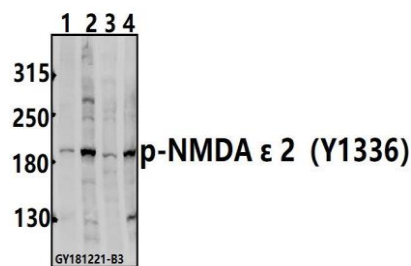
### Storage&Stability:

Store at 4 °C short term. Aliquot and store at -20 °C long term. Avoid freeze-thaw cycles.

### Specificity:

p-NMDA  $\epsilon$  2(Y1336) polyclonal antibody detects endogenous levels of NMDA  $\epsilon$  2 protein only when phosphorylated at Tyr1336 .

### DATA:



Western blot (WB) analysis of p-NMDA  $\epsilon$  2(Y1336) polyclonal antibody at 1:500 dilution

Lane1:U-87MG whole cell lysate(40ug)

Lane2:HEK293T whole cell lysate(40ug)

Lane3:C6 whole cell lysate(40ug)

Lane4:BV2 whole cell lysate(40ug)

### Note:

For research use only, not for use in diagnostic procedure.

### Bioworld Technology, Inc.

Add: 1660 South Highway 100, Suite 500 St. Louis Park, MN 55416,USA.

Email: [info@bioworld.com](mailto:info@bioworld.com)

Tel: 6123263284

Fax: 6122933841

### Bioworld technology, co. Ltd.

Add: No 9, weidi road Qixia District Nanjing, 210046, P. R. China.

Email: [info@biogot.com](mailto:info@biogot.com)

Tel: 0086-025-68037686

Fax: 0086-025-68035151