

ARHGEF10 polyclonal antibody

Catalog: BS5619

Host: Rabbit

Reactivity: Human, Mouse, Rat

BackGround:

ARHGEF10 (rho guanine nucleotide exchange factor 10), also known as GEF10 or KIAA0294, is a 1,369 amino acid protein that contains one DBL-homology domain and is thought to play a role in myelination of peripheral nerves, specifically during development. ARHGEF10 is expressed as four alternatively spliced isoforms that are present at low levels in ovary, lung, testis and kidney, with considerably higher expression in the central and peripheral nervous systems. Defects in the gene encoding ARHGEF10 are the cause of slowed nerve conduction velocity (SNCV), an autosomal dominant disorders that is characterized by a reduction in nerve velocities resulting from lack of proper myelination.

Product:

Rabbit IgG, 1mg/ml in PBS with 0.02% sodium azide, 50% glycerol, pH7.2

Molecular Weight:

~ 152 kDa

Swiss-Prot:

O15013

Purification&Purity:

The antibody was affinity-purified from rabbit antiserum by affinity-chromatography using epitope-specific immunogen and the purity is > 95% (by SDS-PAGE).

Applications:

WB: 1:500~1:1000

IHC: 1:50~1:200

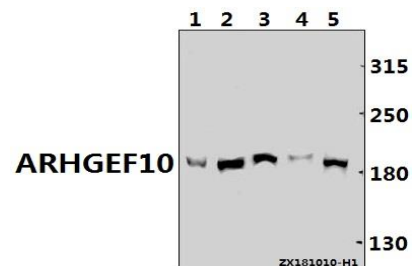
Storage&Stability:

Store at 4 °C short term. Aliquot and store at -20 °C long term. Avoid freeze-thaw cycles.

Specificity:

ARHGEF10 polyclonal antibody detects endogenous levels of ARHGEF10 protein.

DATA:



Western blot (WB) analysis of ARHGEF10 (R370) pAb at 1:1000 dilution

Lane1:C6 whole cell lysate(40ug)

Lane2:3T3-L1 whole cell lysate(40ug)

Lane3:A2780 whole cell lysate(40ug)

Lane4:A375 whole cell lysate(40ug)

Lane5:Hela whole cell lysate(40ug)

Note:

For research use only, not for use in diagnostic procedure.

Bioworld Technology, Inc.

Add: 1660 South Highway 100, Suite 500 St. Louis Park, MN 55416, USA.

Email: info@bioworld.com

Tel: 6123263284

Fax: 6122933841

Bioworld technology, co. Ltd.

Add: No 9, weidi road Qixia District Nanjing, 210046, P. R. China.

Email: info@biogot.com

Tel: 0086-025-68037686

Fax: 0086-025-68035151