

## CD1E polyclonal antibody

Catalog: BS5652

Host: Rabbit

Reactivity: Human, Mouse, Rat

### BackGround:

CD1E, also known as R2 or CD1A, is a 322 amino acid single-pass type I membrane protein that localizes to the lumen of the endoplasmic reticulum, as well as to the golgi apparatus, and contains one Ig-like domain. Expressed in a variety of tissues and on cortical thymocytes, dendritic cells and Langerhans cells, CD1E exists as a heterodimer with  $\beta$ -2-Microglobulin and is necessary for the presentation of glycolipid antigens on the cell surface. CD1E is subject to post-translational mono-ubiquitination and may also be proteolytically cleaved in endosomes to yield a soluble protein. CD1E is present on the surface of some T-cell leukemias, suggesting a possible role in tumorigenesis.

### Product:

Rabbit IgG, 1mg/ml in PBS with 0.02% sodium azide, 50% glycerol, pH7.2

### Molecular Weight:

~ 44 kDa

### Swiss-Prot:

P15812

### Purification&Purity:

The antibody was affinity-purified from rabbit antiserum by affinity-chromatography using epitope-specific immunogen and the purity is > 95% (by SDS-PAGE).

### Applications:

WB: 1:500~1:1000

ICC: 1:50~1:200

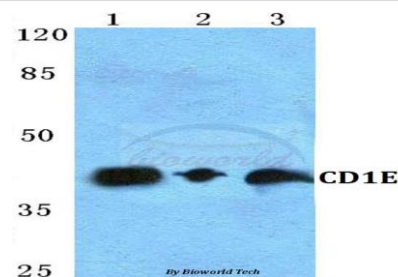
### Storage&Stability:

Store at 4 °C short term. Aliquot and store at -20 °C long term. Avoid freeze-thaw cycles.

### Specificity:

CD1E polyclonal antibody detects endogenous levels of CD1E protein.

### DATA:



Western blot (WB) analysis of CD1E polyclonal antibody at 1:500 dilution

Lane1:Hela cell lysate

Lane2:sp2/0 cell lysate

Lane3:H9C2 cell lysate

### Note:

For research use only, not for use in diagnostic procedure.

### Bioworld Technology, Inc.

Add: 1660 South Highway 100, Suite 500 St. Louis Park, MN 55416, USA.

Email: [info@bioworld.com](mailto:info@bioworld.com)

Tel: 6123263284

Fax: 6122933841

### Bioworld technology, co. Ltd.

Add: No 9, weidi road Qixia District Nanjing, 210046, P. R. China.

Email: [info@biogot.com](mailto:info@biogot.com)

Tel: 0086-025-68037686

Fax: 0086-025-68035151