

CHST1 polyclonal antibody

Catalog: BS5662

Host: Rabbit

Reactivity: Human, Mouse, Rat

BackGround:

Carbohydrate sulfotransferase 1 (CHST1), also referred to as KSGal6ST or KSST, is a keratan sulfate sulfotransferase. It is predominantly expressed in brain and skeletal muscle and localizes to the trans-Golgi network. CHST1 is responsible for mediating the sulfation of keratan in the cornea, which is important in maintaining corneal transparency. In particular, CHST1 catalyzes the transfer of sulfate groups from 3'-phosphoadenosine 5'-phosphosulfate to position six of internal or terminal galactose residues (preferentially the residues adjacent to sulfated GlcNAc) on growing keratan sulfate chains. CHST1 also contributes to the generation of L-selectin ligands. Mutations in the CHST1 gene may play a role in macular corneal dystrophy (MCD).

Product:

Rabbit IgG, 1mg/ml in PBS with 0.02% sodium azide, 50% glycerol, pH7.2

Molecular Weight:

~ 47 kDa

Swiss-Prot:

O43916

Purification&Purity:

The antibody was affinity-purified from rabbit antiserum by affinity-chromatography using epitope-specific immunogen and the purity is > 95% (by SDS-PAGE).

Applications:

WB: 1:500~1:1000

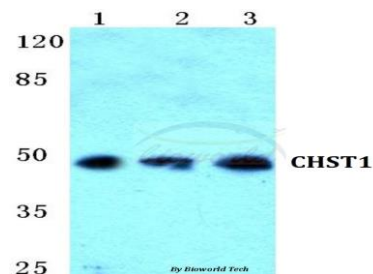
Storage&Stability:

Store at 4 °C short term. Aliquot and store at -20 °C long term. Avoid freeze-thaw cycles.

Specificity:

CHST1 polyclonal antibody detects endogenous levels of CHST1 protein.

DATA:



Western blot (WB) analysis of CHST1 polyclonal antibody at 1:500 dilution

Lane1:A549 cell lysate

Lane2:Raw264.7 cell lysate

Lane3:H9C2 cell lysate

Note:

For research use only, not for use in diagnostic procedure.

Bioworld Technology, Inc.

Add: 1660 South Highway 100, Suite 500 St. Louis Park, MN 55416, USA.

Email: info@bioworld.com

Tel: 6123263284

Fax: 6122933841

Bioworld technology, co. Ltd.

Add: No 9, weidi road Qixia District Nanjing, 210046, P. R. China.

Email: info@biogot.com

Tel: 0086-025-68037686

Fax: 0086-025-68035151