

COMT polyclonal antibody

Catalog: BS5671

Host: Rabbit

Reactivity: Human

BackGround:

Catechol-O-methyltransferase (COMT) plays a crucial role in the regulation of central dopaminergic systems by catalyzing the inactivation of catechol-amines. It is widely distributed in most tissues in soluble and membrane-bound forms. COMT-mediated methylation metabolism of catecholamine neurotransmitters is a first-line detoxification pathway. A Val158Met polymorphism of the COMT gene affects activity of the enzyme and influences performance and efficiency of the prefrontal cortex of the brain. Sequential conversion of estradiol to methoxyestradiol by COMT, contributes to the antimetogenic effects of estradiol on vascular smooth muscle cell growth via estrogen receptor-independent mechanisms. COMTD1 (catechol O-methyltransferase domain-containing protein 1) is a 262 amino acid single-pass type II membrane protein that belongs to the methyltransferase superfamily.

Product:

Rabbit IgG, 1mg/ml in PBS with 0.02% sodium azide, 50% glycerol, pH7.2

Molecular Weight:

~ 30 kDa

Swiss-Prot:

P21964

Purification&Purity:

The antibody was affinity-purified from rabbit antiserum by affinity-chromatography using epitope-specific immunogen and the purity is > 95% (by SDS-PAGE).

Applications:

WB: 1:500~1:1000

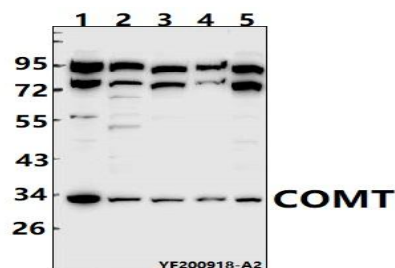
Storage&Stability:

Store at 4 °C short term. Aliquot and store at -20 °C long term. Avoid freeze-thaw cycles.

Specificity:

COMT polyclonal antibody detects endogenous levels of COMT protein.

DATA:



Western blot (WB) analysis of IL3RA pAb at 1:500 dilution

Lane1:Myla2059 whole cell lysate(20ug)

Lane2:U-87MG whole cell lysate(40ug)

Lane3:HepG2 whole cell lysate(40ug)

Lane4:HUT78 whole cell lysate(40ug)

Lane5:L02 whole cell lysate(40ug)

Note:

For research use only, not for use in diagnostic procedure.

Bioworld Technology, Inc.

Add: 1660 South Highway 100, Suite 500 St. Louis Park, MN 55416, USA.

Email: info@bioworld.com

Tel: 6123263284

Fax: 6122933841

Bioworld technology, co. Ltd.

Add: No 9, weidi road Qixia District Nanjing, 210046, P. R. China.

Email: info@biogot.com

Tel: 0086-025-68037686

Fax: 0086-025-68035151