

CPN2 polyclonal antibody

Catalog: BS5676

Host: Rabbit

Reactivity: Human, Mouse, Rat

BackGround:

Carboxypeptidase N (arginine carboxypeptidase or CPN) cleaves basic amino acid residues from the carboxy terminal of peptides and proteins. The enzyme plays a central role in regulating the biologic activity of peptides such as kinins and anaphylatoxins, and therefore is also known as kininase-1 and anaphylatoxin inactivator. CPN is a tetrameric complex consisting of two identical regulatory subunits (CPN reg) and two identical catalytic subunits (CPN cat). The two glycosylated CPN reg subunits protect the two CPN cat subunits and keep them in the circulation. CPN reg is a member of the leucinerich repeat family of proteins and the gene which encodes CPN reg maps to human chromosome 8p22-p23. CPN cat is a member of the regulatory B-type carboxypeptidase group and the gene which encodes CPN cat maps to human chromosome 10.

Product:

Rabbit IgG, 1mg/ml in PBS with 0.02% sodium azide, 50% glycerol, pH7.2

Molecular Weight:

~ 61, 83 kDa

Swiss-Prot:

P22792

Purification&Purity:

The antibody was affinity-purified from rabbit antiserum by affinity-chromatography using epitope-specific immunogen and the purity is > 95% (by SDS-PAGE).

Applications:

WB: 1:500~1:1000

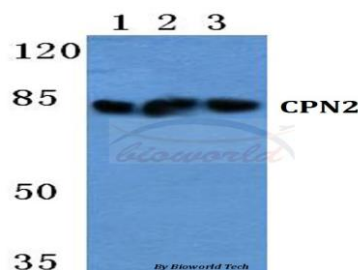
Storage&Stability:

Store at 4 °C short term. Aliquot and store at -20 °C long term. Avoid freeze-thaw cycles.

Specificity:

CPN2 polyclonal antibody detects endogenous levels of Carboxypeptidase N regulatory subunit protein.

DATA:



Western blot (WB) analysis of CPN2 polyclonal antibody at 1:500 dilution

Lane1:MCF-7 cell lysate

Lane2:Hela cell lysate

Lane3:Raw264.7 cell lysate

Note:

For research use only, not for use in diagnostic procedure.

Bioworld Technology, Inc.

Add: 1660 South Highway 100, Suite 500 St. Louis Park, MN 55416, USA.

Email: info@bioworld.com

Tel: 6123263284

Fax: 6122933841

Bioworld technology, co. Ltd.

Add: No 9, weidi road Qixia District Nanjing, 210046, P. R. China.

Email: info@biogot.com

Tel: 0086-025-68037686

Fax: 0086-025-68035151