

CYP2J2 polyclonal antibody

Catalog: BS5687

Host: Rabbit

Reactivity: Human, Mouse, Rat

BackGround:

CYP2J2 (cytochrome P450 2J2), also known as CPJ2, is a member of the cytochrome P450 protein superfamily. Localized to the ER (endoplasmic reticulum) and microsomal membranes, CYP2J2 is one of three cytochrome P450 enzymes that are responsible for metabolizing arachidonic acid to epoxyeicosatrienoic acids. Functioning via an NADPH-dependent olefin epoxidation, CYP2J2 epoxidizes endogenous cardiac arachidonic acid pools to four different isoforms of epoxyeicosatrienoic acid, all of which are important regulators of cardiovascular homeostasis and vascular tone. CYP2J2 is highly expressed in the heart with low levels of expression found in the liver, colon and kidneys. Up-regulation of CYP2J2 by a c-Jun responsive pathway is thought to promote the neoplastic phenotype of certain carcinoma cells, implicating CYP2J2 in carcinogenesis.

Product:

Rabbit IgG, 1mg/ml in PBS with 0.02% sodium azide, 50% glycerol, pH7.2

Molecular Weight:

~ 57 kDa

Swiss-Prot:

P51589

Purification&Purity:

The antibody was affinity-purified from rabbit antiserum by affinity-chromatography using epitope-specific immunogen and the purity is > 95% (by SDS-PAGE).

Applications:

WB: 1:500~1:1000

IHC: 1:50~1:200

ICC: 1:50~1:200

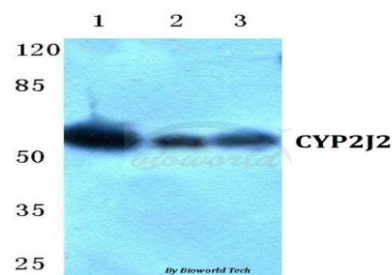
Storage&Stability:

Store at 4 °C short term. Aliquot and store at -20 °C long term. Avoid freeze-thaw cycles.

Specificity:

CYP2J2 polyclonal antibody detects endogenous levels of CYP2J2 protein.

DATA:



Western blot (WB) analysis of CYP2J2 polyclonal antibody at 1:500 dilution

Lane1:Hela cell lysate

Lane2:NIH-3T3 cell lysate

Lane3:H9C2 cell lysate

Note:

For research use only, not for use in diagnostic procedure.

Bioworld Technology, Inc.

Add: 1660 South Highway 100, Suite 500 St. Louis Park, MN 55416, USA.

Email: info@bioworld.com

Tel: 6123263284

Fax: 6122933841

Bioworld technology, co. Ltd.

Add: No 9, weidi road Qixia District Nanjing, 210046, P. R. China.

Email: info@biogot.com

Tel: 0086-025-68037686

Fax: 0086-025-68035151