

ARHGEF5 polyclonal antibody

Catalog: BS5835

Host: Rabbit

Reactivity: Human, Mouse, Rat

BackGround:

Rho GTPases, which play fundamental roles in numerous cellular processes, are initiated by external stimuli that signal through G-protein coupled receptors. ARHGEF5 (Rho guanine nucleotide exchange factor (GEF) 5), also known as P60 or transforming immortalized mammary oncogene (TIM), is a 1597 amino acid cytoplasmic protein. ARHGEF5 is believed to form a complex with G proteins and be involved in the initiation of Rho-dependent signals. It has also been suggested that ARHGEF5 may be involved in the organization of the cytoskeleton. ARHGEF5 contains one PH domain, one DH domain and one SH3 domain. Existing as two isoforms produced by alternative splicing, ARHGEF5 is mainly expressed in pancreas, liver, kidney, placenta and lung.

Product:

Rabbit IgG, 1mg/ml in PBS with 0.02% sodium azide, 50% glycerol, pH7.2

Molecular Weight:

~ 60, 177 kDa

Swiss-Prot:

Q12774

Purification&Purity:

The antibody was affinity-purified from rabbit antiserum by affinity-chromatography using epitope-specific immunogen and the purity is > 95% (by SDS-PAGE).

Applications:

WB: 1:500~1:1000

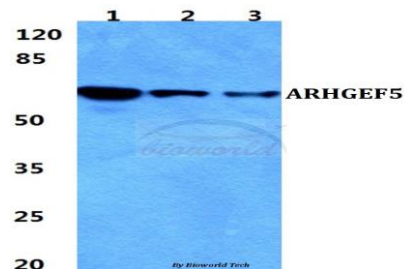
Storage&Stability:

Store at 4 °C short term. Aliquot and store at -20 °C long term. Avoid freeze-thaw cycles.

Specificity:

ARHGEF5 polyclonal antibody detects endogenous levels of ARHGEF5 protein.

DATA:



Western blot (WB) analysis of ARHGEF5 polyclonal antibody at 1:500 dilution

Lane1:HEK293T cell lysate

Lane2:sp2/0 cell lysate

Lane3:H9C2 cell lysate

Note:

For research use only, not for use in diagnostic procedure.

Bioworld Technology, Inc.

Add: 1660 South Highway 100, Suite 500 St. Louis Park, MN 55416, USA.

Email: info@bioworld.com

Tel: 6123263284

Fax: 6122933841

Bioworld technology, co. Ltd.

Add: No 9, weidi road Qixia District Nanjing, 210046, P. R. China.

Email: info@biogol.com

Tel: 0086-025-68037686

Fax: 0086-025-68035151