

## PGLS polyclonal antibody

Catalog: BS5852

Host: Rabbit

Reactivity: Human

### BackGround:

PGLS (6-phosphogluconolactonase), also known as 6PGL, is a 258 amino acid protein that belongs to the glucosamine/galactosamine-6-phosphate isomerase family and the 6-phosphogluconolactonase subfamily. Localizing to cytoplasm, PGLS is a particularly active enzyme that catalyzes the hydrolysis of 6-phosphogluconolactone to 6-phosphogluconate, which is the second step of the pentose phosphate pathway. Highly conserved, PGLS shares 33% to 37% sequence similarity with yeast Sol1, Sol2, Sol3 and Sol4, 26% similarity with the C-terminal portion of human H6PD, 20% to 25% similarity with bacterial devB proteins and 17% similarity with human GNPDA1. PGLS erythrocyte deficiency, an autosomal dominant disorder, in conjunction with G6PD deficiency, may play a role in hemolytic anemia.

### Product:

Rabbit IgG, 1mg/ml in PBS with 0.02% sodium azide, 50% glycerol, pH7.2

### Molecular Weight:

~ 28 kDa

### Swiss-Prot:

O95336

### Purification&Purity:

The antibody was affinity-purified from rabbit antiserum by affinity-chromatography using epitope-specific immunogen and the purity is > 95% (by SDS-PAGE).

### Applications:

WB: 1:500~1:1000

IHC: 1:50~1:200

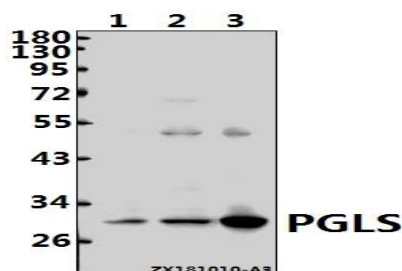
### Storage&Stability:

Store at 4 °C short term. Aliquot and store at -20 °C long term. Avoid freeze-thaw cycles.

### Specificity:

PGLS polyclonal antibody detects endogenous levels of PGLS protein.

### DATA:



Western blot (WB) analysis of PGLS (A226) pAb at 1:500 dilution

Lane1:HCT116 whole cell lysate(40ug)

Lane2:Panc1 whole cell lysate(40ug)

Lane3:HEK293T whole cell lysate(40ug)

### Note:

For research use only, not for use in diagnostic procedure.

### Bioworld Technology, Inc.

Add: 1660 South Highway 100, Suite 500 St. Louis Park, MN 55416, USA.

Email: [info@bioworld.com](mailto:info@bioworld.com)

Tel: 6123263284

Fax: 6122933841

### Bioworld technology, co. Ltd.

Add: No 9, weidi road Qixia District Nanjing, 210046, P. R. China.

Email: [info@biogot.com](mailto:info@biogot.com)

Tel: 0086-025-68037686

Fax: 0086-025-68035151