

## PSMC6 polyclonal antibody

Catalog: BS5869

Host: Rabbit

Reactivity: Human, Mouse, Rat

### Background:

In eukaryotic cells, selective breakdown of cellular proteins is ensured by their ubiquitination and subsequent degradation by the 26S Proteasome. The 26S Proteasome is a protease complex that selectively breaks down proteins that have been modified by polyubiquitin chains. It is made up of two multisubunit complexes: the 20S Proteasome chamber, which serves as the proteolytic core of the complex and two 19S regulatory particles which recognize and unfold ubiquitinated proteins. PSMC6 (proteasome (prosome, macropain) 26S subunit, ATPase 6), also known as P44, p42, SUG2, S10B or CADP44, is a regulatory component of the 26S proteasome. More specifically, PSMC6 is one of the six ATPase subunits of the 19S regulator base. It contains a leucine zipper motif and an AAA (ATPase associated with diverse cellular activities) domain and belongs to the AAA ATPase family of chaperone-like ATPases.

### Product:

Rabbit IgG, 1mg/ml in PBS with 0.02% sodium azide, 50% glycerol, pH7.2

### Molecular Weight:

~ 44 kDa

### Swiss-Prot:

P62333

### Purification&Purity:

The antibody was affinity-purified from rabbit antiserum by affinity-chromatography using epitope-specific immunogen and the purity is > 95% (by SDS-PAGE).

### Applications:

WB: 1:500~1:1000

ICC: 1:50~1:200

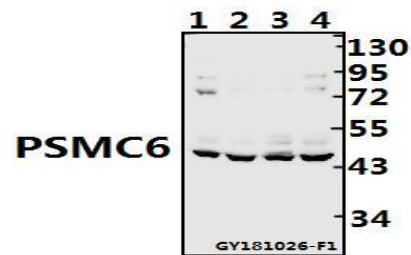
### Storage&Stability:

Store at 4 °C short term. Aliquot and store at -20 °C long term. Avoid freeze-thaw cycles.

### Specificity:

PSMC6 polyclonal antibody detects endogenous levels of PSMC6 protein.

### DATA:



Western blot (WB) analysis of PSMC6 pAb at 1:1000 dilution

Lane1:HCT116 whole cell lysate(40ug)

Lane2:The Testis tissue lysate of Rat(40ug)

Lane3:The Testis tissue lysate of Mouse(40ug)

Lane4:Hela whole cell lysate(40ug)

### Note:

For research use only, not for use in diagnostic procedure.

### Bioworld Technology, Inc.

Add: 1660 South Highway 100, Suite 500 St. Louis Park, MN 55416, USA.

Email: [info@bioworld.com](mailto:info@bioworld.com)

Tel: 6123263284

Fax: 6122933841

### Bioworld technology, co. Ltd.

Add: No 9, weidi road Qixia District Nanjing, 210046, P. R. China.

Email: [info@biogot.com](mailto:info@biogot.com)

Tel: 0086-025-68037686

Fax: 0086-025-68035151