

RPL3 polyclonal antibody

Catalog: BS5904

Host: Rabbit

Reactivity: Human

BackGround:

Ribosomes, the organelles that catalyze protein synthesis, are composed of a small subunit (40S) and a large subunit (60S) that consist of over 80 distinct ribosomal proteins. Mammalian ribosomal proteins are encoded by multigene families that contain processed pseudogenes and one functional intron-containing gene within their coding regions. Ribosomal Protein L3, also known as RPL3 or TARBP-B, is a 403 amino acid protein that localizes to the cytoplasm and belongs to the L3P family of ribosomal proteins. Expressed as multiple alternatively spliced isoforms, Ribosomal Protein L3 is able to bind to HIV-1 mRNA, possibly activating HIV-1 protein translation. Like most ribosomal proteins, Ribosomal Protein L3 exists as multiple processed pseudogenes that are scattered throughout the genome.

Product:

Rabbit IgG, 1mg/ml in PBS with 0.02% sodium azide, 50% glycerol, pH7.2

Molecular Weight:

~ 46 kDa

Swiss-Prot:

P39023

Purification&Purity:

The antibody was affinity-purified from rabbit antiserum by affinity-chromatography using epitope-specific immunogen and the purity is > 95% (by SDS-PAGE).

Applications:

WB: 1:500~1:1000

IHC: 1:50~1:200

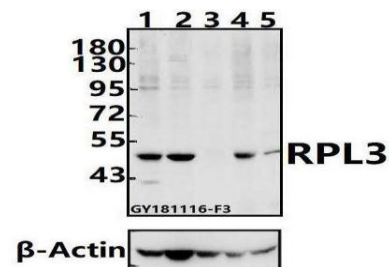
Storage&Stability:

Store at 4 °C short term. Aliquot and store at -20 °C long term. Avoid freeze-thaw cycles.

Specificity:

RPL3 polyclonal antibody detects endogenous levels of RPL3 protein.

DATA:



Western blot (WB) analysis of RPL3 polyclonal antibody at 1:500 dilution

Lane1:K562 whole cell lysate(40ug)

Lane2:A2780 whole cell lysate(40ug)

Lane3:SK-OVCAR3 whole cell lysate(40ug)

Lane4:HCT116 whole cell lysate(40ug)

Lane5:EC9706 whole cell lysate(40ug)

Note:

For research use only, not for use in diagnostic procedure.

Bioworld Technology, Inc.

Add: 1660 South Highway 100, Suite 500 St. Louis Park, MN 55416, USA.

Email: info@bioworld.com

Tel: 6123263284

Fax: 6122933841

Bioworld technology, co. Ltd.

Add: No 9, weidi road Qixia District Nanjing, 210046, P. R. China.

Email: info@biogot.com

Tel: 0086-025-68037686

Fax: 0086-025-68035151