

CDKL5 polyclonal antibody

Catalog: BS60038

Host: Rabbit

Reactivity: Human, Mouse, Rat

BackGround:

Cell cycle progression is controlled in part by a family of cyclin proteins and cyclin-dependent kinases (Cdk). Cdk proteins work in concert with the cyclins to phosphorylate key substrates involved in each phase of cell cycle progression. Another family of proteins, Cdk inhibitors, also plays a role in regulating the cell cycle by binding to cyclin-Cdk complexes and modulating their activity. CDKL5 (cyclin-dependent kinase-like 5) is a 1030 amino acid protein that belongs to the CMGC Ser/Thr protein kinase family. Expressed in brain, lung, kidney, prostate, ovary, placenta, pancreas and testis, CDKL5 is thought to play a role in cell cycle regulation. Defects in CDKL5 are a cause of several disorders, such as X-linked infantile spasm syndrome and Rett syndrome.

Product:

Rabbit IgG, 1mg/ml in PBS with 0.02% sodium azide, 50% glycerol, pH7.2

Molecular Weight:

~ 110 kDa

Swiss-Prot:

O76039

Purification&Purity:

The antibody was affinity-purified from rabbit antiserum by affinity-chromatography using epitope-specific immunogen and the purity is > 95% (by SDS-PAGE).

Applications:

WB: 1:500~1:1000

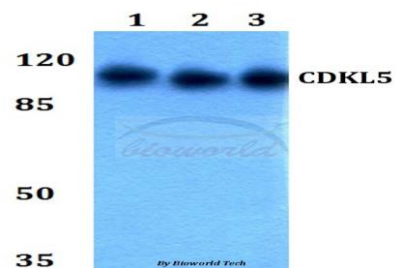
Storage&Stability:

Store at 4 °C short term. Aliquot and store at -20 °C long term. Avoid freeze-thaw cycles.

Specificity:

CDKL5 polyclonal antibody detects endogenous levels of CDKL5 protein.

DATA:



Western blot (WB) analysis of CDKL5 polyclonal antibody at 1:500 dilution

Lane1:HEK293Twhole cell lysate

Lane2:Raw264.7 whole cell lysate

Lane3:PC12 whole cell lysate

Note:

For research use only, not for use in diagnostic procedure.

Bioworld Technology, Inc.

Add: 1660 South Highway 100, Suite 500 St. Louis Park, MN 55416, USA.

Email: info@bioworld.com

Tel: 6123263284

Fax: 6122933841

Bioworld technology, co. Ltd.

Add: No 9, weidi road Qixia District Nanjing, 210046, P. R. China.

Email: info@biogot.com

Tel: 0086-025-68037686

Fax: 0086-025-68035151