

ANP32D polyclonal antibody

Catalog: BS60041

Host: Rabbit

Reactivity: Human, Mouse, Rat

BackGround:

ANP32D (acidic (leucine-rich) nuclear phosphoprotein 32 family, member D), also known as PP32R2 (phosphoprotein 32-related protein 2) or tumorigenic protein pp32r2, is a 131 amino acid protein that contains 3 leucine-rich repeats and belongs to the ANP32 family. ANP32D shares 89.3% amino acid sequence identity with ANP32A, a tumor suppressor that inhibits a variety of cancers, such as prostate and breast cancers. Although similar to ANP32A, ANP32D is tumorigenic and is preferentially expressed in prostatic cancer. Conversely, it is uncertain that ANP32D is neurally expressed. Intronless, ANP32D may be a pseudogene that is expressed in pathological situations and may also modulate the oncogenic potential of human prostate cancer. A

Product:

Rabbit IgG, 1mg/ml in PBS with 0.02% sodium azide, 50% glycerol, pH7.2

Molecular Weight:

~ 15 kDa

Swiss-Prot:

O95626

Purification&Purity:

The antibody was affinity-purified from rabbit antiserum by affinity-chromatography using epitope-specific immunogen and the purity is > 95% (by SDS-PAGE).

Applications:

WB: 1:500~1:1000

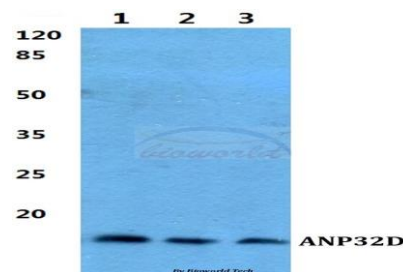
Storage&Stability:

Store at 4 °C short term. Aliquot and store at -20 °C long term. Avoid freeze-thaw cycles.

Specificity:

ANP32D polyclonal antibody detects endogenous levels of ANP32D protein.

DATA:



Western blot (WB) analysis of ANP32D polyclonal antibody at 1:500 dilution

Lane1:Hela whole cell lysate

Lane2:Mouse liver tissue lysate

Lane3:Rat liver tissue lysate

Note:

For research use only, not for use in diagnostic procedure.

Bioworld Technology, Inc.

Add: 1660 South Highway 100, Suite 500 St. Louis Park, MN 55416, USA.

Email: info@bioworld.com

Tel: 6123263284

Fax: 6122933841

Bioworld technology, co. Ltd.

Add: No 9, weidi road Qixia District Nanjing, 210046, P. R. China.

Email: info@biogot.com

Tel: 0086-025-68037686

Fax: 0086-025-68035151