

BMP2K polyclonal antibody

Catalog: BS60064

Host: Rabbit

Reactivity: Human

BackGround:

The phosphorylation and dephosphorylation of proteins on serine and threonine residues is an essential means of regulating a broad range of cellular functions in eukaryotes, including cell division, homeostasis and apoptosis. A group of proteins that are intimately involved in this process are the serine/threonine (Ser/Thr) protein kinases. BMP2K (BMP2 inducible kinase), also known as BIKE, is a 1,161 amino acid nuclear protein that contains one protein kinase domain and belongs to the Ser/Thr protein kinase family. Thought to be involved in osteoblast differentiation, BMP2K catalyzes the ATP-dependent phosphorylation of bone morphogenic proteins (BMPs); proteins that are essential for proper cartilage and bone formation. Via its catalytic activity, BMP2K may play a role in signaling pathways that mediate bone growth and cellular differentiation. Three isoforms of BMP2K exist due to alternative splicing events.

Product:

Rabbit IgG, 1mg/ml in PBS with 0.02% sodium azide, 50% glycerol, pH7.2.

Molecular Weight:

~ 130 kDa

Swiss-Prot:

Q9NSY1

Purification&Purity:

The antibody was affinity-purified from rabbit antiserum by affinity-chromatography using epitope-specific immunogen and the purity is > 95% (by SDS-PAGE).

Applications:

WB: 1:1000~1:2000

IP 1:50 - 1:200

Storage&Stability:

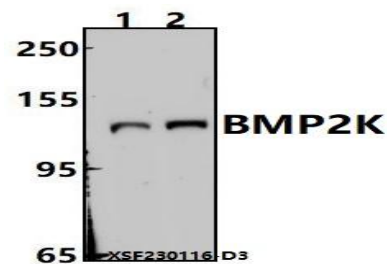
Store at 4 °C short term. Aliquot and store at -20 °C long

term. Avoid freeze-thaw cycles.

Specificity:

BMP2K polyclonal antibody detects endogenous levels of BMP2K protein.

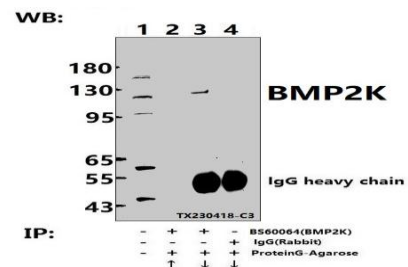
DATA:



Western blot (WB) analysis of BMP2K polyclonal antibody at 1:1000 dilution

Lane1:A549 whole cell lysate(30ug)

Lane2:MCF-7 whole cell lysate(30ug)



Immunoprecipitation of MCF-7 cell lysates using BMP2K pAb (Sepharose Bead Conjugate)#BD0048 (lane 2 and lane 3) and Nonspecific IgG Control (Sepharose Bead Conjugate)#BD0048 (lane 4). Lane 1 is 30% input. The western blot was probed using BMP2K pAb #BS60064.

Note:

For research use only, not for use in diagnostic procedure.

Bioworld Technology, Inc.

Add: 1660 South Highway 100, Suite 500 St. Louis Park, MN 55416, USA.

Email: info@bioworld.com

Tel: 6123263284

Fax: 6122933841

Bioworld technology, co. Ltd.

Add: No 9, weidi road Qixia District Nanjing, 210046, P. R. China.

Email: info@biogot.com

Tel: 0086-025-68037686

Fax: 0086-025-68035151